

Product datasheet for **TA339178**

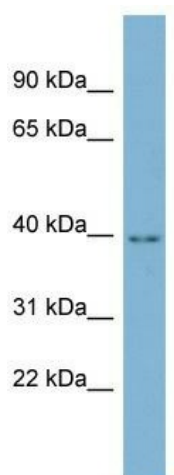
C16orf48 (ENKD1) Rabbit Polyclonal Antibody

Product data:

Product Type:	Primary Antibodies
Applications:	WB
Recommended Dilution:	WB
Reactivity:	Human
Host:	Rabbit
Isotype:	IgG
Clonality:	Polyclonal
Immunogen:	The immunogen for anti-C16orf48 antibody: synthetic peptide directed towards the middle region of human C16orf48. Synthetic peptide located within the following region: RHSCSLQVLAQVLEQQRQAQEHYNATQKGHVPHYLLERRDLWRREAEARK
Formulation:	Liquid. Purified antibody supplied in 1x PBS buffer with 0.09% (w/v) sodium azide and 2% sucrose. <i>Note that this product is shipped as lyophilized powder to China customers.</i>
Concentration:	lot specific
Purification:	Protein A purified
Conjugation:	Unconjugated
Storage:	Store at -20°C as received.
Stability:	Stable for 12 months from date of receipt.
Predicted Protein Size:	39 kDa
Gene Name:	enkurin domain containing 1
Database Link:	NP_115516 Entrez Gene 84080 Human Q9H0I2
Background:	The exact function of ENKD1 remains unknown.
Synonyms:	C16orf48; DAKV6410
Note:	Immunogen Sequence Homology: Dog: 100%; Pig: 100%; Rat: 100%; Horse: 100%; Human: 100%; Mouse: 100%; Guinea pig: 100%; Bovine: 93%; Rabbit: 93%



[View online »](#)

Product images:

WB Suggested Anti-ENKD1 Antibody Titration:
0.2-1 ug/ml; Positive Control: THP-1 cell lysate