

## Product datasheet for **TA339174**

### HSPC302 (TBCK) Rabbit Polyclonal Antibody

#### Product data:

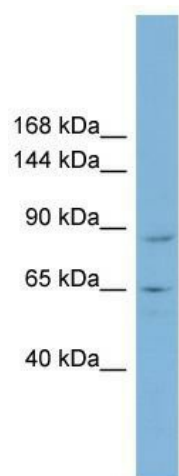
Product Type:	Primary Antibodies
Applications:	WB
Recommended Dilution:	WB
Reactivity:	Human
Host:	Rabbit
Isotype:	IgG
Clonality:	Polyclonal
Immunogen:	The immunogen for anti-MGC16169 antibody: synthetic peptide directed towards the middle region of human MGC16169. Synthetic peptide located within the following region: PPICTLPNFLFEDGESFGQGRDRSSLDDTTVTLSCQLRNRLKDVGGEA
Formulation:	Liquid. Purified antibody supplied in 1x PBS buffer with 0.09% (w/v) sodium azide and 2% sucrose. <i>Note that this product is shipped as lyophilized powder to China customers.</i>
Concentration:	lot specific
Purification:	Protein A purified
Conjugation:	Unconjugated
Storage:	Store at -20°C as received.
Stability:	Stable for 12 months from date of receipt.
Predicted Protein Size:	94 kDa
Gene Name:	TBC1 domain containing kinase
Database Link:	<a href="#">NP_149106</a> <a href="#">Entrez Gene 93627 Human</a> <a href="#">Q8TEA7</a>
Background:	The function of this protein remains unknown.
Synonyms:	HSPC302; IHPRF3; TBCKL
Note:	Immunogen Sequence Homology: Dog: 100%; Pig: 100%; Rat: 100%; Horse: 100%; Human: 100%; Mouse: 100%; Bovine: 100%; Rabbit: 100%; Zebrafish: 100%; Guinea pig: 93%



[View online »](#)

Protein Families: Druggable Genome, Protein Kinase

### Product images:



WB Suggested Anti-TBCK Antibody Titration: 0.2-1 ug/ml; Positive Control: NCI-H226 cell lysate