

## Product datasheet for **TA339173**

### FZR1 Rabbit Polyclonal Antibody

#### Product data:

Product Type:	Primary Antibodies
Applications:	WB
Recommended Dilution:	WB
Reactivity:	Human
Host:	Rabbit
Isotype:	IgG
Clonality:	Polyclonal
Immunogen:	The immunogen for anti-FZR1 antibody: synthetic peptide directed towards the N terminal of human FZR1. Synthetic peptide located within the following region: SSPVSSPSKHGDRFIPSRAGANWSVNFHRINENEKSPSQNRKAKDATSDN
Formulation:	Liquid. Purified antibody supplied in 1x PBS buffer with 0.09% (w/v) sodium azide and 2% sucrose. <i>Note that this product is shipped as lyophilized powder to China customers.</i>
Concentration:	lot specific
Purification:	Protein A purified
Conjugation:	Unconjugated
Storage:	Store at -20°C as received.
Stability:	Stable for 12 months from date of receipt.
Predicted Protein Size:	55 kDa
Gene Name:	fizzy/cell division cycle 20 related 1
Database Link:	<a href="#">NP_057347</a> <a href="#">Entrez Gene 51343 Human</a> <a href="#">Q9UM11</a>



[View online »](#)

**Background:** FZR1 is a key regulator of ligase activity of the anaphase promoting complex/cyclosome (APC/C), which confers substrate specificity upon the complex. FZR1 associates with the APC/C in late mitosis, in replacement of CDC20, and activates the APC/C during anaphase and telophase. The APC/C remains active in degrading substrates to ensure that positive regulators of the cell cycle do not accumulate prematurely. At the G1/S transition FZR1 is phosphorylated, leading to its dissociation from the APC/C. Following DNA damage, it is required for the G2 DNA damage checkpoint: its dephosphorylation and reassociation with the APC/C leads to the ubiquitination of PLK1, preventing entry into mitosis.

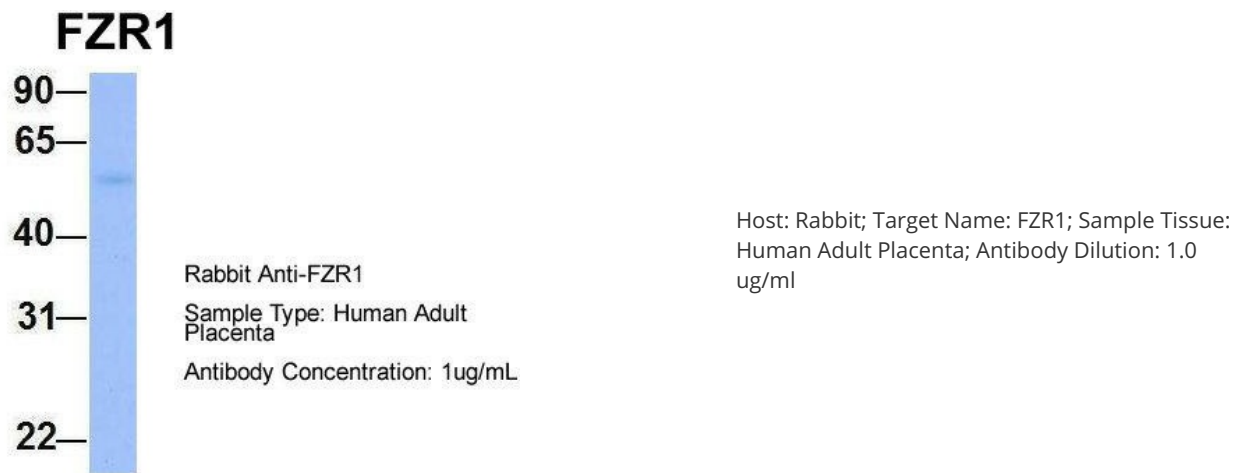
**Synonyms:** CDC20C; CDH1; FZR; FZR2; HCDH; HCDH1

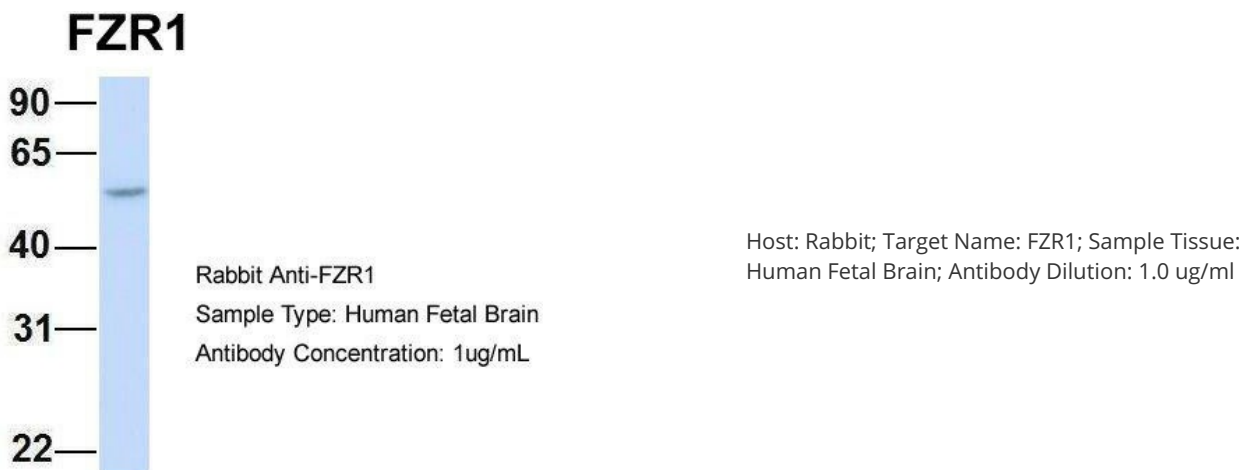
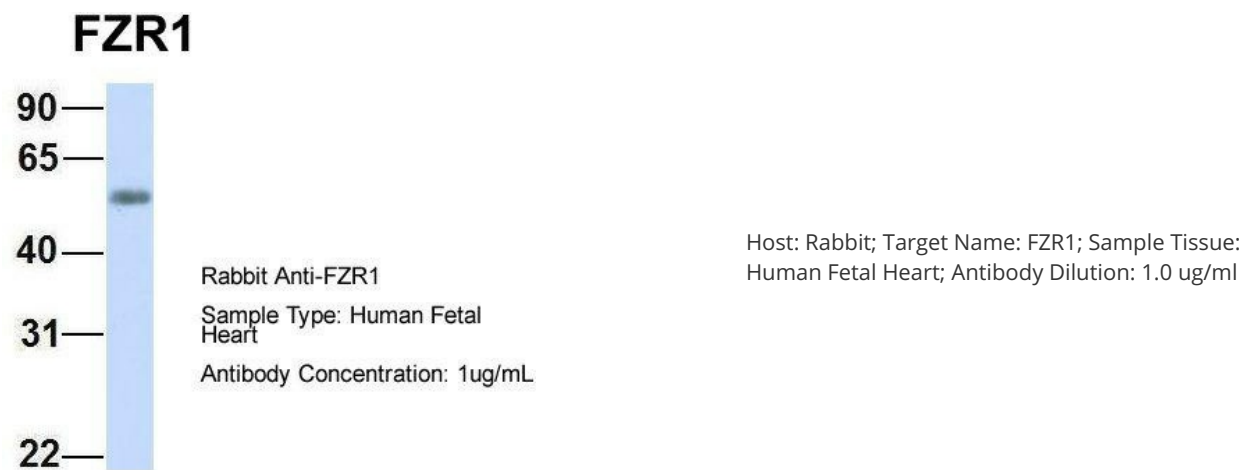
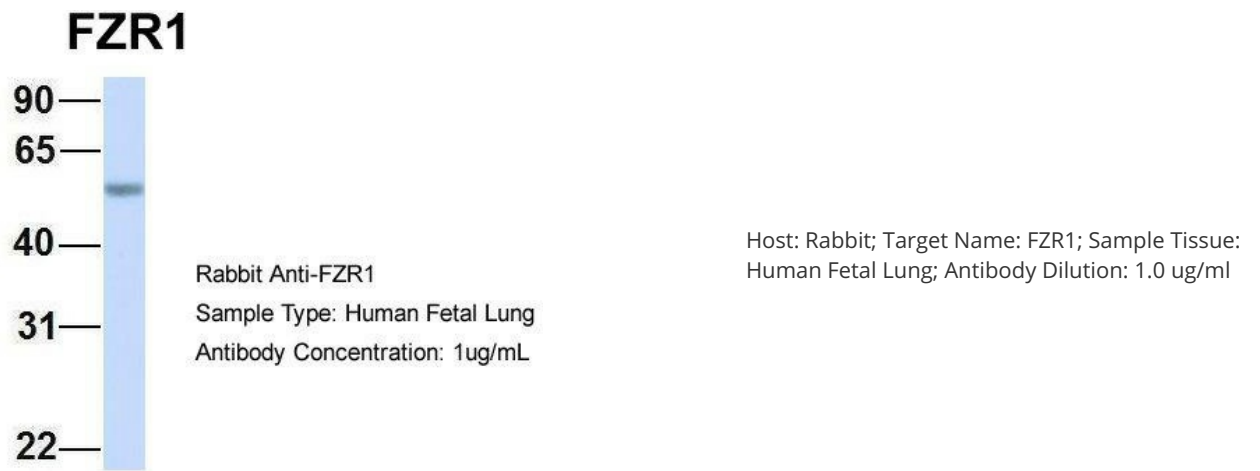
**Note:** Immunogen Sequence Homology: Dog: 100%; Pig: 100%; Rat: 100%; Horse: 100%; Human: 100%; Mouse: 100%; Bovine: 100%; Zebrafish: 100%; Guinea pig: 100%

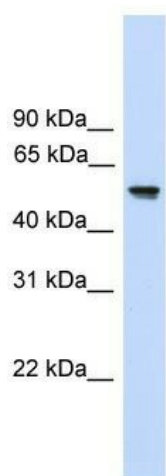
**Protein Families:** Druggable Genome

**Protein Pathways:** Cell cycle, Progesterone-mediated oocyte maturation, Ubiquitin mediated proteolysis

### Product images:







WB Suggested Anti-FZR1 Antibody Titration: 0.2-1 ug/ml; Positive Control: 721\_B cell lysate FZR1 is strongly supported by BioGPS gene expression data to be expressed in Human 721\_B cells