

Product datasheet for **TA339169**

GABARAP Rabbit Polyclonal Antibody

Product data:

Product Type:	Primary Antibodies
Applications:	WB
Recommended Dilution:	WB
Reactivity:	Human, Insect, Cow, Dog, Mouse, Pig, Rabbit, Rat, Zebrafish
Host:	Rabbit
Isotype:	IgG
Clonality:	Polyclonal
Immunogen:	The immunogen for anti-GABARAP antibody: synthetic peptide directed towards the N terminal of human GABARAP. Synthetic peptide located within the following region: IRKKYPDRVPVIVEKAPKARIGDLDKKKYLVPDLTVGQFYFLIRKRIHL
Formulation:	Liquid. Purified antibody supplied in 1x PBS buffer with 0.09% (w/v) sodium azide and 2% sucrose. <i>Note that this product is shipped as lyophilized powder to China customers.</i>
Concentration:	lot specific
Purification:	Protein A purified
Conjugation:	Unconjugated
Storage:	Store at -20°C as received.
Stability:	Stable for 12 months from date of receipt.
Predicted Protein Size:	14 kDa
Gene Name:	GABA type A receptor-associated protein
Database Link:	NP_009209 Entrez Gene 56486 Mouse Entrez Gene 58974 Rat Entrez Gene 479479 Dog Entrez Gene 11337 Human O95166



[View online »](#)

Background: Gamma-aminobutyric acid A receptors [GABA(A) receptors] are ligand-gated chloride channels that mediate inhibitory neurotransmission. GABA(A) receptor-associated protein (GABARAP) is highly positively charged in its N-terminus and shares sequence similarity with light chain-3 of microtubule-associated proteins 1A and 1B. This protein clusters neurotransmitter receptors by mediating interaction with the cytoskeleton.

Synonyms: ATG8A; GABARAP-a; MM46

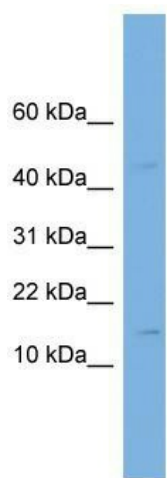
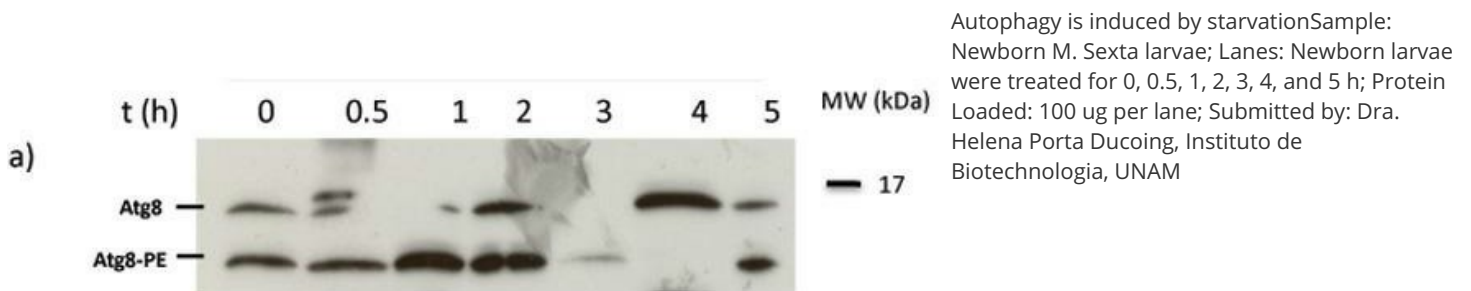
Note: Immunogen Sequence Homology: Dog: 100%; Pig: 100%; Rat: 100%; Human: 100%; Mouse: 100%; Bovine: 100%; Rabbit: 100%; Zebrafish: 100%; Horse: 79%; Guinea pig: 79%

Protein Families: Druggable Genome

Protein Pathways: Regulation of autophagy

Product images:

GABARAP



WB Suggested Anti-GABARAP Antibody Titration: 0.2-1 ug/ml; ELISA Titer: 1: 1562500; Positive Control: HT1080 cell lysate GABARAP is supported by BioGPS gene expression data to be expressed in HT1080