

Product datasheet for **TA339162**

PHC2 Rabbit Polyclonal Antibody

Product data:

Product Type:	Primary Antibodies
Applications:	WB
Recommended Dilution:	WB
Reactivity:	Human
Host:	Rabbit
Isotype:	IgG
Clonality:	Polyclonal
Immunogen:	The immunogen for anti-PHC2 antibody: synthetic peptide directed towards the N terminal of human PHC2. Synthetic peptide located within the following region: GGSGRPTGPQISVYSGIPDRQTVQVIQQALHRQPSTAAQYLQQMYAAQQQ
Formulation:	Liquid. Purified antibody supplied in 1x PBS buffer with 0.09% (w/v) sodium azide and 2% sucrose. <i>Note that this product is shipped as lyophilized powder to China customers.</i>
Concentration:	lot specific
Purification:	Protein A purified
Conjugation:	Unconjugated
Storage:	Store at -20°C as received.
Stability:	Stable for 12 months from date of receipt.
Predicted Protein Size:	91 kDa
Gene Name:	polyhomeotic homolog 2
Database Link:	NP_932157 Entrez Gene 1912 Human Q8IXK0



[View online »](#)

Background:

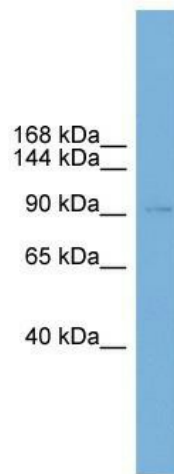
In *Drosophila melanogaster*, the 'Polycomb' group (PcG) of genes are part of a cellular memory system that is responsible for the stable inheritance of gene activity. PcG proteins form a large multimeric, chromatin-associated protein complex. The protein encoded by this gene has homology to the *Drosophila* PcG protein 'polyhomeotic' (Ph) and is known to heterodimerize with EDR1 and colocalize with BMI1 in interphase nuclei of human cells. The specific function in human cells has not yet been determined. Two transcript variants encoding different isoforms have been found for this gene.

Synonyms:

EDR2; HPH2; PH2

Note:

Immunogen Sequence Homology: Dog: 100%; Pig: 100%; Rat: 100%; Horse: 100%; Human: 100%; Mouse: 100%; Bovine: 100%; Rabbit: 100%; Guinea pig: 100%; Zebrafish: 93%

Product images:

WB Suggested Anti-PHC2 Antibody Titration: 0.2-1 ug/ml; ELISA Titer: 1: 312500; Positive Control: MCF7 cell lysate