

## Product datasheet for **TA339161**

### TAF3 Rabbit Polyclonal Antibody

#### Product data:

Product Type:	Primary Antibodies
Applications:	WB
Recommended Dilution:	WB
Reactivity:	Human
Host:	Rabbit
Isotype:	IgG
Clonality:	Polyclonal
Immunogen:	The immunogen for anti-TAF3 antibody: synthetic peptide directed towards the middle region of human TAF3. Synthetic peptide located within the following region: RDREREKDKNKDKSKEKDKVKEKEKDKETGRETYPWKEFLKEEEADPYK
Formulation:	Liquid. Purified antibody supplied in 1x PBS buffer with 0.09% (w/v) sodium azide and 2% sucrose.
Concentration:	lot specific
Purification:	Protein A purified
Conjugation:	Unconjugated
Storage:	Store at -20°C as received.
Stability:	Stable for 12 months from date of receipt.
Predicted Protein Size:	103 kDa
Gene Name:	TATA-box binding protein associated factor 3
Database Link:	<a href="#">NP_114129</a> <a href="#">Entrez Gene 83860 Human</a> <a href="#">Q5VWG9</a>
Background:	Transcription factor TFIID is one of the general factors required for accurate and regulated initiation by RNA polymerase II. TFIID is a multimeric protein complex that plays a central role in mediating promoter responses to various activators and repressors. TAF3 is required in complex with TBPL2 for the differentiation of myoblasts into myocytes. The complex replaces TFIID at specific promoters at an early stage in the differentiation process.
Synonyms:	TAF140; TAFII-140; TAFII140

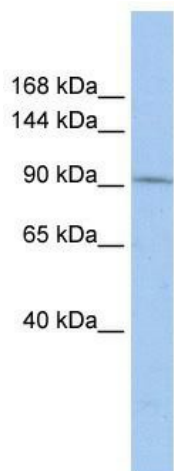


[View online »](#)

**Note:** Immunogen Sequence Homology: Human: 100%; Pig: 92%; Rat: 92%; Rabbit: 92%; Guinea pig: 92%; Zebrafish: 85%; Dog: 79%; Yeast: 79%; Bovine: 79%

**Protein Families:** Druggable Genome

**Product images:**



WB Suggested Anti-TAF3 Antibody Titration: 0.2-1 ug/ml; ELISA Titer: 1: 12500; Positive Control: HepG2 cell lysate