

Product datasheet for **TA339160**

Kmt5b Rabbit Polyclonal Antibody

Product data:

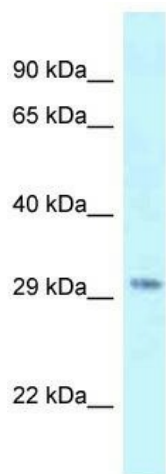
| | |
|-------------------------|---|
| Product Type: | Primary Antibodies |
| Applications: | 10k-ChIP, WB |
| Recommended Dilution: | WB, ChIP |
| Reactivity: | Mouse, Human |
| Host: | Rabbit |
| Isotype: | IgG |
| Clonality: | Polyclonal |
| Immunogen: | . Synthetic peptide located within the following region: FINHDCRPNCKFVSTGRDTACVKALRDIEPGEEISCYGDGFFGENNEFC |
| Formulation: | Liquid. Purified antibody supplied in 1x PBS buffer with 0.09% (w/v) sodium azide and 2% sucrose. <i>Note that this product is shipped as lyophilized powder to China customers.</i> |
| Concentration: | lot specific |
| Purification: | Protein A purified |
| Conjugation: | Unconjugated |
| Storage: | Store at -20°C as received. |
| Stability: | Stable for 12 months from date of receipt. |
| Predicted Protein Size: | 35 kDa |
| Gene Name: | suppressor of variegation 4-20 homolog 1 (Drosophila) |
| Database Link: | NP_001161356 Entrez Gene 51111 Human Entrez Gene 225888 Mouse Q3U8K7 |
| Background: | Suv420h1 is a histone methyltransferase that specifically trimethylates 'Lys-20' of histone H4. H4 'Lys-20' trimethylation represents a specific tag for epigenetic transcriptional repression. It mainly functions in pericentric heterochromatin region |
| Synonyms: | C630029K18Rik; CGI-85; CGI85; KMT5B; MGC703; MGC21161; MGC118906; MGC118909; OTTHUMP00000197482; OTTHUMP00000197488; Suv4-20h1 |



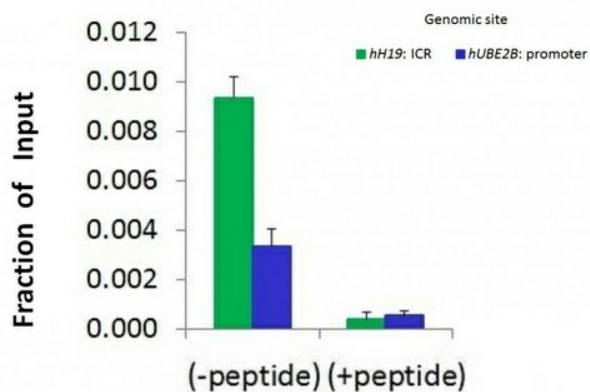
[View online »](#)

Note: Immunogen Sequence Homology: Dog: 100%; Rat: 100%; Human: 100%; Mouse: 100%; Bovine: 100%; Horse: 93%; Pig: 86%; Guinea pig: 86%; Rabbit: 77%; Zebrafish: 77%

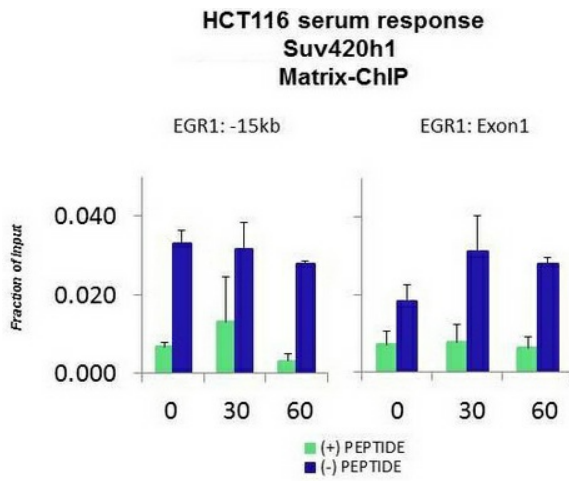
Product images:



WB Suggested Anti-Suv420h1 Antibody; Titration: 1.0 ug/ml; Positive Control: Mouse Thymus



Chromatin Immunoprecipitation (ChIP) Using Suv420h1 antibody - C-terminal region and HCT116 Cells



Quiescent human colon carcinoma HCT116 cultures were treated with 10% FBS for three time points (0, 15, 30min) or (0, 30, 60min) were used in Matrix-ChIP and real-time PCR assays at EGR1 gene (Exon1) and 15kb upstream site.