

## Product datasheet for **TA339159**

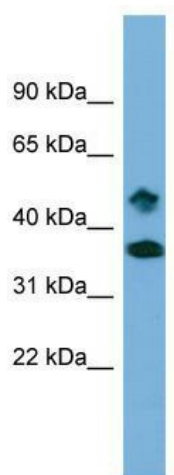
### SETD6 Rabbit Polyclonal Antibody

#### Product data:

Product Type:	Primary Antibodies
Applications:	WB
Recommended Dilution:	WB
Reactivity:	Human
Host:	Rabbit
Isotype:	IgG
Clonality:	Polyclonal
Immunogen:	The immunogen for anti-SETD6 antibody: synthetic peptide directed towards the middle region of human SETD6. Synthetic peptide located within the following region: ELKDQDGGGDDKREEGLTITNIPKLSWRQLLQNSVLLTLQTYATDLK
Formulation:	Liquid. Purified antibody supplied in 1x PBS buffer with 0.09% (w/v) sodium azide and 2% sucrose. <i>Note that this product is shipped as lyophilized powder to China customers.</i>
Concentration:	lot specific
Purification:	Protein A purified
Conjugation:	Unconjugated
Storage:	Store at -20°C as received.
Stability:	Stable for 12 months from date of receipt.
Predicted Protein Size:	51 kDa
Gene Name:	SET domain containing 6
Database Link:	<a href="#">NP_079136</a> <a href="#">Entrez Gene 79918 Human Q8TBK2</a>
Background:	The function of this protein remains unknown.
Synonyms:	FLJ21148
Note:	Immunogen Sequence Homology: Human: 100%; Rabbit: 87%; Pig: 86%



[View online »](#)

**Product images:**

WB Suggested Anti-SETD6 Antibody Titration: 0.2-1 ug/ml; Positive Control: THP-1 cell lysate