

Product datasheet for **TA339158**

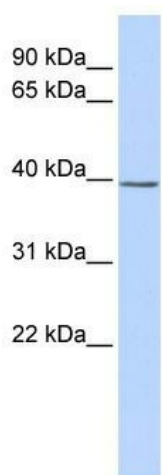
SETD3 Rabbit Polyclonal Antibody

Product data:

Product Type:	Primary Antibodies
Applications:	WB
Recommended Dilution:	WB
Reactivity:	Human
Host:	Rabbit
Isotype:	IgG
Clonality:	Polyclonal
Immunogen:	The immunogen for anti-SETD3 antibody: synthetic peptide directed towards the middle region of human SETD3. Synthetic peptide located within the following region: AVSSVMTRQNQIPTEDGSRVTLALIPLWDMCNHTNGLTPEDSFALAVASA
Formulation:	Liquid. Purified antibody supplied in 1x PBS buffer with 0.09% (w/v) sodium azide and 2% sucrose.
Concentration:	lot specific
Purification:	Protein A purified
Conjugation:	Unconjugated
Storage:	Store at -20°C as received.
Stability:	Stable for 12 months from date of receipt.
Predicted Protein Size:	34 kDa
Gene Name:	SET domain containing 3
Database Link:	NP_954574 Entrez Gene 84193 Human Q86TU7
Background:	SETD3 contains 1 SET domain. The function of the SETD3 protein remains unknown.
Synonyms:	C14orf154
Note:	Immunogen Sequence Homology: Human: 100%


[View online »](#)

Product images:



WB Suggested Anti-SETD3 Antibody Titration: 0.2-1 ug/ml; ELISA Titer: 1: 312500; Positive Control: Jurkat cell lysate