

Product datasheet for **TA339157**

Pygopus 2 (PYGO2) Rabbit Polyclonal Antibody

Product data:

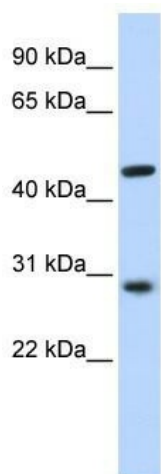
| | |
|-------------------------|--|
| Product Type: | Primary Antibodies |
| Applications: | WB |
| Recommended Dilution: | WB |
| Reactivity: | Human, Mouse |
| Host: | Rabbit |
| Isotype: | IgG |
| Clonality: | Polyclonal |
| Immunogen: | The immunogen for anti-PYGO2 antibody: synthetic peptide directed towards the N terminal of human PYGO2. Synthetic peptide located within the following region: AASAPPPDKLEGGGGPAPPSTGRKQGKAGLQMKSPKRRKSNTQ |
| Formulation: | Liquid. Purified antibody supplied in 1x PBS buffer with 0.09% (w/v) sodium azide and 2% sucrose. <i>Note that this product is shipped as lyophilized powder to China customers.</i> |
| Concentration: | lot specific |
| Purification: | Protein A purified |
| Conjugation: | Unconjugated |
| Storage: | Store at -20°C as received. |
| Stability: | Stable for 12 months from date of receipt. |
| Predicted Protein Size: | 41 kDa |
| Gene Name: | pygopus family PHD finger 2 |
| Database Link: | NP_612157 Entrez Gene 68911 Mouse Entrez Gene 90780 Human Q9BRQ0 |
| Background: | PYGO2 is involved in signal transduction through the Wnt pathway. |
| Synonyms: | 1190004M21Rik |
| Note: | Immunogen Sequence Homology: Pig: 100%; Rat: 100%; Horse: 100%; Human: 100%; Mouse: 100%; Bovine: 100%; Rabbit: 100%; Guinea pig: 100%; Dog: 93% |



[View online »](#)

Protein Families: Druggable Genome, Transcription Factors

Product images:



WB Suggested Anti-PYGO2 Antibody Titration:
0.2-1 ug/ml; ELISA Titer: 1: 312500; Positive
Control: Hela cell lysate