

Product datasheet for **TA339156**

PHD finger protein 6 (PHF6) Rabbit Polyclonal Antibody

Product data:

Product Type:	Primary Antibodies
Applications:	WB
Recommended Dilution:	WB
Reactivity:	Human, Mouse
Host:	Rabbit
Isotype:	IgG
Clonality:	Polyclonal
Immunogen:	The immunogen for anti-PHF6 antibody: synthetic peptide directed towards the N terminal of human PHF6. Synthetic peptide located within the following region: VGQNHSEGDGAPALLTTAPPPGLQPGAGGTPGGPGGGGAPPRYATLEHPFH
Formulation:	Liquid. Purified antibody supplied in 1x PBS buffer with 0.09% (w/v) sodium azide and 2% sucrose.
Concentration:	lot specific
Purification:	Protein A purified
Conjugation:	Unconjugated
Storage:	Store at -20°C as received.
Stability:	Stable for 12 months from date of receipt.
Predicted Protein Size:	41 kDa
Gene Name:	PHD finger protein 6
Database Link:	NP_115834 Entrez Gene 70998 Mouse Entrez Gene 84295 Human Q8IWS0
Background:	PHF6 is a member of the plant homeodomain (PHD)-like finger (PHF) family. PHF6 is a protein with two PHD-type zinc finger domains, indicating a potential role in transcriptional regulation that localizes to the nucleolus. Mutations affecting the coding region
Synonyms:	BFLS; BORJ; CENP-31

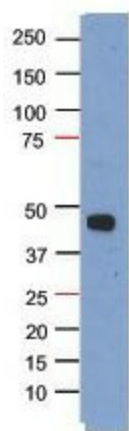


[View online »](#)

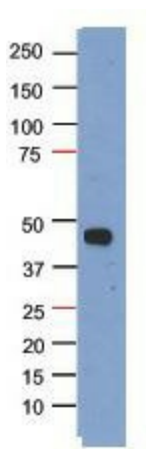
Note: Immunogen Sequence Homology: Dog: 100%; Pig: 100%; Rat: 100%; Human: 100%; Horse: 93%; Mouse: 93%; Bovine: 93%; Rabbit: 93%; Guinea pig: 92%

Protein Families: Druggable Genome, Transcription Factors

Product images:



WB Suggested Anti-PHF6 Antibody Titration: 5.0 ug/ml; Positive Control: Jurkat cell lysate



Sample Type: HEK293T cells transfected with a plasmid for over expression of myc-tagged PHF6
Primary Dilution: 1: 1000 Secondary (goat anti-rabbit HRP) Dilution: 1: 1000