

## Product datasheet for **TA339153**

### PHF23 Rabbit Polyclonal Antibody

#### Product data:

Product Type:	Primary Antibodies
Applications:	WB
Recommended Dilution:	WB
Reactivity:	Human
Host:	Rabbit
Isotype:	IgG
Clonality:	Polyclonal
Immunogen:	The immunogen for anti-PHF23 antibody: synthetic peptide directed towards the N terminal of human PHF23. Synthetic peptide located within the following region: LEAMAESPEDPPPTLKPETQPPEKRRRTIEDFNKFCFVLAYAGYIPPS
Formulation:	Liquid. Purified antibody supplied in 1x PBS buffer with 0.09% (w/v) sodium azide and 2% sucrose. <i>Note that this product is shipped as lyophilized powder to China customers.</i>
Concentration:	lot specific
Purification:	Protein A purified
Conjugation:	Unconjugated
Storage:	Store at -20°C as received.
Stability:	Stable for 12 months from date of receipt.
Predicted Protein Size:	44 kDa
Gene Name:	PHD finger protein 23
Database Link:	<a href="#">NP_077273</a> <a href="#">Entrez Gene 79142 Human Q9BUL5</a>
Background:	PHF23 contains 1 PHD-type zinc finger. It belongs to the PHF23 family. A chromosomal aberration involving PHF23, translocation t(11;17)(p15;p13) with NUP98, is found in a patient with acute myeloid leukemia (AML).
Synonyms:	hJUNE-1b

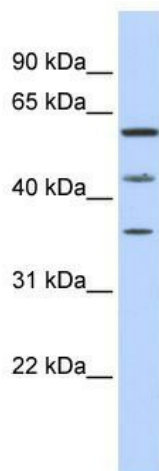


[View online »](#)

**Note:** Immunogen Sequence Homology: Dog: 100%; Pig: 100%; Rat: 100%; Human: 100%; Mouse: 100%; Bovine: 100%; Rabbit: 100%

**Protein Families:** Druggable Genome, Transcription Factors

**Product images:**



WB Suggested Anti-PHF23 Antibody Titration: 0.2-1 ug/ml; ELISA Titer: 1: 312500; Positive Control: MCF7 cell lysate