

## Product datasheet for TA339151

### PHF13 Rabbit Polyclonal Antibody

#### Product data:

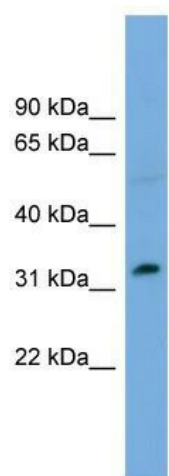
Product Type:	Primary Antibodies
Applications:	WB
Recommended Dilution:	WB
Reactivity:	Human
Host:	Rabbit
Isotype:	IgG
Clonality:	Polyclonal
Immunogen:	The immunogen for anti-PHF13 antibody: synthetic peptide directed towards the middle region of human PHF13. Synthetic peptide located within the following region: GSCATVSPDQVKEIKTEGKRTIVRQGKQVFRDEDEDSTGNDEDIMVDSDDD
Formulation:	Liquid. Purified antibody supplied in 1x PBS buffer with 0.09% (w/v) sodium azide and 2% sucrose. <i>Note that this product is shipped as lyophilized powder to China customers.</i>
Concentration:	lot specific
Purification:	Protein A purified
Conjugation:	Unconjugated
Storage:	Store at -20°C as received.
Stability:	Stable for 12 months from date of receipt.
Predicted Protein Size:	33 kDa
Gene Name:	PHD finger protein 13
Database Link:	<a href="#">NP_722519</a> <a href="#">Entrez Gene 148479 Human</a> <a href="#">Q86YI8</a>
Background:	PHF13 contains 1 PHD-type zinc finger. The function of the PHF13 protein remains unknown.
Synonyms:	PHF5; SPOC1
Note:	Immunogen Sequence Homology: Pig: 100%; Rat: 100%; Horse: 100%; Human: 100%; Mouse: 100%; Bovine: 100%; Rabbit: 100%; Guinea pig: 100%



[View online »](#)

Protein Families: Druggable Genome, Transcription Factors

### Product images:



WB Suggested Anti-PHF13 Antibody Titration: 0.2-1 ug/ml; Positive Control: OVCAR-3 cell lysate