

Product datasheet for **TA339150**

PHF22 (INTS12) Rabbit Polyclonal Antibody

Product data:

Product Type:	Primary Antibodies
Applications:	WB
Recommended Dilution:	WB
Reactivity:	Human
Host:	Rabbit
Isotype:	IgG
Clonality:	Polyclonal
Immunogen:	The immunogen for anti-INTS12 antibody: synthetic peptide directed towards the N terminal of human INTS12. Synthetic peptide located within the following region: DESLARGIDSSYRPSQKDVEPPKISSTKNISIKQEPKISSSLPSGNNNGK
Formulation:	Liquid. Purified antibody supplied in 1x PBS buffer with 0.09% (w/v) sodium azide and 2% sucrose.
Concentration:	lot specific
Purification:	Protein A purified
Conjugation:	Unconjugated
Storage:	Store at -20°C as received.
Stability:	Stable for 12 months from date of receipt.
Predicted Protein Size:	49 kDa
Gene Name:	integrator complex subunit 12
Database Link:	NP_065128 Entrez Gene 57117 Human Q96CB8
Background:	INTS12 is a subunit of the Integrator complex, which associates with the C-terminal domain of RNA polymerase II large subunit (POLR2A) and mediates 3-prime end processing of small nuclear RNAs U1 (RNU1) and U2 (RNU2).INTS12 is a subunit of the Integrator complex, which associates with the C-terminal domain of RNA polymerase II large subunit (POLR2A; MIM 180660) and mediates 3-prime end processing of small nuclear RNAs U1 (RNU1; MIM 180680) and U2 (RNU2; MIM 180690) (Baillat et al., 2005 [PubMed 16239144]). [supplied by OMIM]



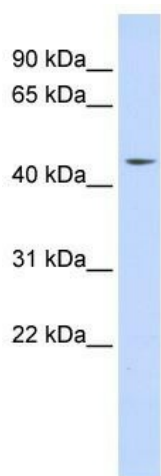
[View online »](#)

Synonyms: INT12; PHF22; SBBI22

Note: Immunogen Sequence Homology: Dog: 100%; Human: 100%; Mouse: 100%; Bovine: 100%; Horse: 93%; Pig: 92%; Rat: 92%; Guinea pig: 92%; Rabbit: 86%

Protein Families: Druggable Genome, Transcription Factors

Product images:



WB Suggested Anti-INTS12 Antibody Titration:
0.2-1 ug/ml; ELISA Titer: 1: 312500; Positive
Control: Human Liver