

Product datasheet for **TA339149**

Ints12 Rabbit Polyclonal Antibody

Product data:

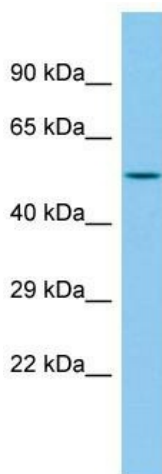
Product Type:	Primary Antibodies
Applications:	WB
Recommended Dilution:	WB
Reactivity:	Rat
Host:	Rabbit
Isotype:	IgG
Clonality:	Polyclonal
Immunogen:	The immunogen for Anti-Ints12 antibody is: synthetic peptide directed towards the C-terminal region of Rat Ints12. Synthetic peptide located within the following region: SGNGNSATAGPTGSITSKTTSETSSSTSASLKGPTSQESQLNAMKRLQMV
Formulation:	Liquid. Purified antibody supplied in 1x PBS buffer with 0.09% (w/v) sodium azide and 2% sucrose. <i>Note that this product is shipped as lyophilized powder to China customers.</i>
Concentration:	lot specific
Purification:	Protein A purified
Conjugation:	Unconjugated
Storage:	Store at -20°C as received.
Stability:	Stable for 12 months from date of receipt.
Predicted Protein Size:	50 kDa
Gene Name:	integrator complex subunit 12
Database Link:	NP_001007641 Entrez Gene 295448 Rat Q68FR3
Background:	Ints12 is a component of the Integrator complex, a complex involved in the small nuclear RNAs (snRNA) U1 and U2 transcription and in their 3'-box-dependent processing. The Integrator complex is associated with the C-terminal domain (CTD) of RNA polymerase II largest subunit (POLR2A) and is recruited to the U1 and U2 snRNAs genes.
Synonyms:	INT12; OTTHUMP00000161875; PHF22; SBB122



[View online »](#)

Note: Immunogen Sequence Homology: Dog: 100%; Pig: 100%; Rat: 100%; Horse: 100%; Human: 100%; Mouse: 100%; Bovine: 100%; Rabbit: 100%; Guinea pig: 100%; Zebrafish: 91%

Product images:



Host: Rabbit

Target Name: Ints12

Sample Tissue: Rat Pancreas Lysate

Antibody Dilution: 1.0 μ g/ml

Host: Rabbit; Target Name: Ints12; Sample Tissue: Rat Pancreas lysates; Antibody Dilution: 1.0 ug/ml