

Product datasheet for **TA339143**

ZNF197 Rabbit Polyclonal Antibody

Product data:

Product Type:	Primary Antibodies
Applications:	WB
Recommended Dilution:	WB
Reactivity:	Human
Host:	Rabbit
Isotype:	IgG
Clonality:	Polyclonal
Immunogen:	The immunogen for anti-ZNF197 antibody: synthetic peptide directed towards the N terminal of human ZNF197. Synthetic peptide located within the following region: MTRENVAHNALRQEGLVKGKDDTWKWGTSFQGSSSVWETSHLHFRQLRY
Formulation:	Liquid. Purified antibody supplied in 1x PBS buffer with 0.09% (w/v) sodium azide and 2% sucrose. <i>Note that this product is shipped as lyophilized powder to China customers.</i>
Concentration:	lot specific
Purification:	Protein A purified
Conjugation:	Unconjugated
Storage:	Store at -20°C as received.
Stability:	Stable for 12 months from date of receipt.
Predicted Protein Size:	30 kDa
Gene Name:	zinc finger protein 197
Database Link:	NP_001020026 Entrez Gene 10168 Human O14709



[View online »](#)

Background:

This gene product belongs to the zinc finger protein superfamily, members of which are regulatory proteins characterized by nucleic acid-binding zinc finger domains. The encoded protein contains 20 tandemly arrayed C2H2-type zinc fingers, a Kruppel-associated box (KRAB) domain, and a SCAN box. This transcript turns over rapidly and contains 3' UTR AUUUA motifs, which are often a hallmark of rapid turnover. It is overexpressed in some thyroid papillary carcinomas. This gene is located in a cluster of zinc finger genes at 3p21. Two alternatively spliced transcripts encoding different isoforms have been described. [provided by RefSeq, Jul 2008]

Synonyms:

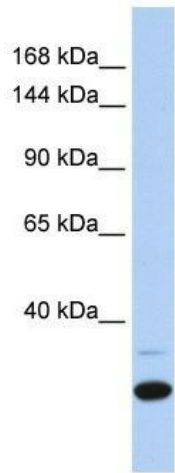
D3S1363E; P18; VHLaK; ZKSCAN9; ZNF20; ZNF166; ZSCAN41

Note:

Immunogen Sequence Homology: Pig: 100%; Horse: 100%; Human: 100%; Bovine: 100%; Dog: 92%; Rat: 92%

Protein Families:

Druggable Genome, Transcription Factors

Product images:

WB Suggested Anti-ZNF197 Antibody Titration:
0.2-1 ug/ml; ELISA Titer: 1:312500; Positive
Control: Human heart