

## Product datasheet for **TA339138**

### SCML1 Rabbit Polyclonal Antibody

#### Product data:

Product Type:	Primary Antibodies
Applications:	WB
Recommended Dilution:	WB
Reactivity:	Human
Host:	Rabbit
Isotype:	IgG
Clonality:	Polyclonal
Immunogen:	The immunogen for anti-SCML1 antibody: synthetic peptide directed towards the N terminal of human SCML1. Synthetic peptide located within the following region: PSFCMEEYQRAELEEDPILSRTPSPVHPSDFSEHNCQPYASDGATYGSS
Formulation:	Liquid. Purified antibody supplied in 1x PBS buffer with 0.09% (w/v) sodium azide and 2% sucrose. <i>Note that this product is shipped as lyophilized powder to China customers.</i>
Concentration:	lot specific
Purification:	Protein A purified
Conjugation:	Unconjugated
Storage:	Store at -20°C as received.
Stability:	Stable for 12 months from date of receipt.
Predicted Protein Size:	23 kDa
Gene Name:	sex comb on midleg-like 1 (Drosophila)
Database Link:	<a href="#">NP_006737</a> <a href="#">Entrez Gene 6322 Human Q9UN30</a>
Background:	Putative Polycomb group (PcG) protein. PcG proteins act by forming multiprotein complexes, which are required to maintain the transcriptionally repressive state of homeotic genes throughout development. May be involved in spermatogenesis during sexual maturation.
Synonyms:	SCML1

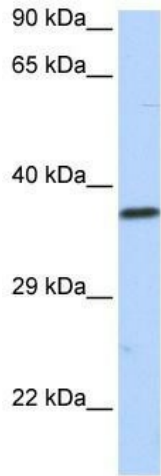


[View online »](#)

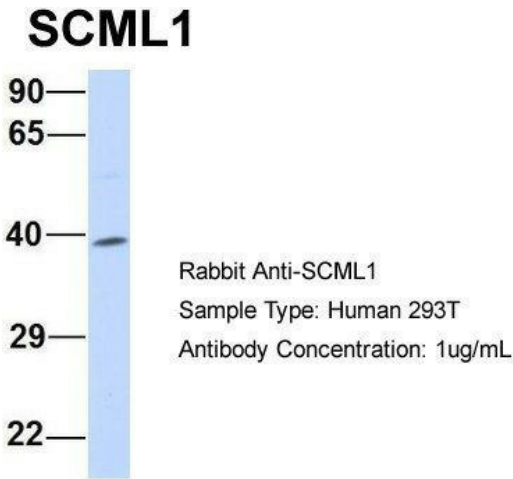
**Note:** Immunogen Sequence Homology: Human: 100%

**Protein Families:** Transcription Factors

**Product images:**



WB Suggested Anti-SCML1 Antibody Titration: 0.2-1 ug/ml; ELISA Titer: 1:1562500; Positive Control: Hela cell lysate SCML1 is supported by BioGPS gene expression data to be expressed in HeLa



Host: Rabbit; Target Name: SCML1; Sample Tissue: Human 293T; Antibody Dilution: 1.0 ug/ml SCML1 is supported by BioGPS gene expression data to be expressed in HEK293T