

Product datasheet for **TA339137**

SCML1 Rabbit Polyclonal Antibody

Product data:

Product Type:	Primary Antibodies
Applications:	IHC, WB
Recommended Dilution:	WB, IHC
Reactivity:	Human
Host:	Rabbit
Isotype:	IgG
Clonality:	Polyclonal
Immunogen:	The immunogen for anti-SCML1 antibody: synthetic peptide directed towards the middle region of human SCML1. Synthetic peptide located within the following region: ESYSPTLPVSRRENNSPSNLPRPSFCMEEYQRAELEEDPILSRTPSPVHP
Formulation:	Liquid. Purified antibody supplied in 1x PBS buffer with 0.09% (w/v) sodium azide and 2% sucrose. <i>Note that this product is shipped as lyophilized powder to China customers.</i>
Concentration:	lot specific
Purification:	Protein A purified
Conjugation:	Unconjugated
Storage:	Store at -20°C as received.
Stability:	Stable for 12 months from date of receipt.
Predicted Protein Size:	34 kDa
Gene Name:	sex comb on midleg-like 1 (Drosophila)
Database Link:	NP_006737 Entrez Gene 6322 Human Q9UN30
Background:	Putative Polycomb group (PcG) protein. PcG proteins act by forming multiprotein complexes, which are required to maintain the transcriptionally repressive state of homeotic genes throughout development. May be involved in spermatogenesis during sexual maturation.
Synonyms:	SCML1

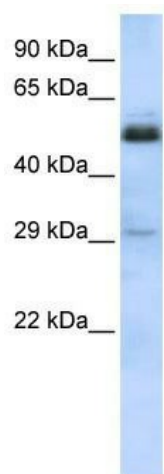


[View online »](#)

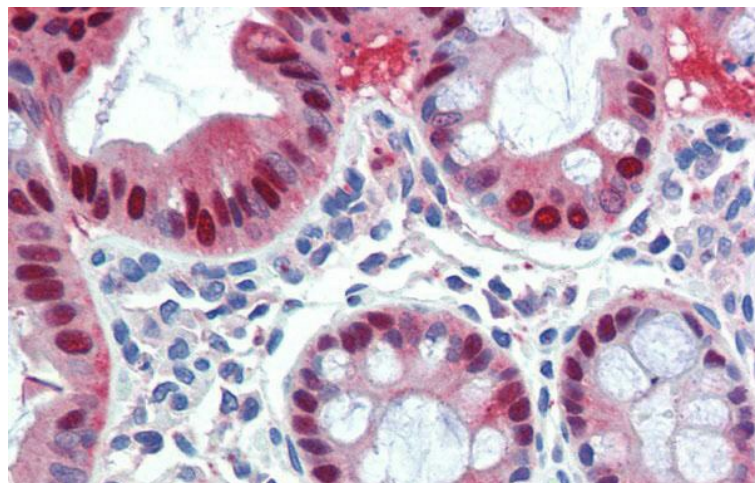
Note: Immunogen Sequence Homology: Human: 100%; Pig: 86%; Horse: 77%

Protein Families: Transcription Factors

Product images:



WB Suggested Anti-SCML1 Antibody Titration: 0.2-1 ug/ml; ELISA Titer: 1:12500; Positive Control: HeLa cell lysate SCML1 is supported by BioGPS gene expression data to be expressed in HeLa



Immunohistochemistry with Human Colon lysate tissue at an antibody concentration of 5.0 ug/ml using anti-SCML1 antibody