

## Product datasheet for **TA339136**

### ZNF266 Rabbit Polyclonal Antibody

#### Product data:

Product Type:	Primary Antibodies
Applications:	IHC, WB
Recommended Dilution:	WB, IHC
Reactivity:	Human
Host:	Rabbit
Isotype:	IgG
Clonality:	Polyclonal
Immunogen:	The immunogen for anti-ZNF266 antibody: synthetic peptide directed towards the N terminal of human ZNF266. Synthetic peptide located within the following region: EESRTVQRGDFQASEWKVQLKTKELALQQDVLGEPTSSGIQMIGSHNGGE
Formulation:	Liquid. Purified antibody supplied in 1x PBS buffer with 0.09% (w/v) sodium azide and 2% sucrose.
Concentration:	lot specific
Purification:	Protein A purified
Conjugation:	Unconjugated
Storage:	Store at -20°C as received.
Stability:	Stable for 12 months from date of receipt.
Predicted Protein Size:	62 kDa
Gene Name:	zinc finger protein 266
Database Link:	<a href="#">NP_932175</a> <a href="#">Entrez Gene 10781 Human</a> <a href="#">Q14584</a>
Background:	This gene encodes a protein containing many tandem zinc-finger motifs. Zinc fingers are protein or nucleic acid-binding domains, and may be involved in a variety of functions, including regulation of transcription. This gene is located in a cluster of similar genes encoding zinc finger proteins on chromosome 19. Alternative splicing results in multiple transcript variants for this gene. [provided by RefSeq, Sep 2012]
Synonyms:	HZF1



[View online »](#)

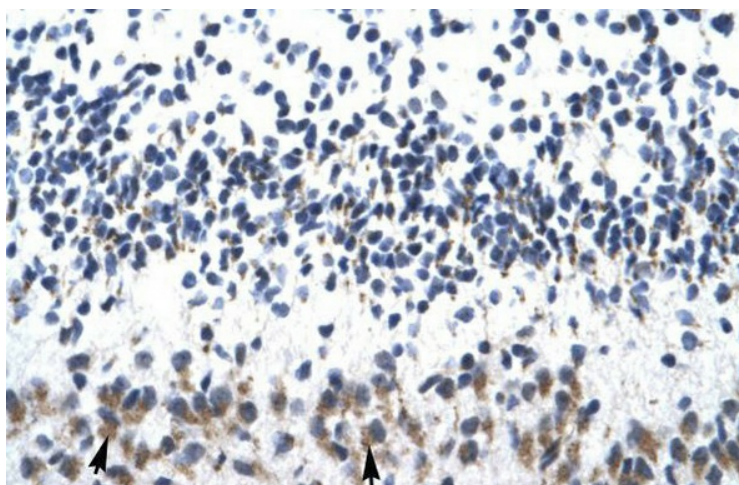
Note: Immunogen Sequence Homology: Human: 100%

Protein Families: Transcription Factors

### Product images:



WB Suggested Anti-ZNF266 Antibody Titration:  
0.2-1 ug/ml; ELISA Titer: 1:1562500; Positive  
Control: HepG2 cell lysate



Human Cerebellum