

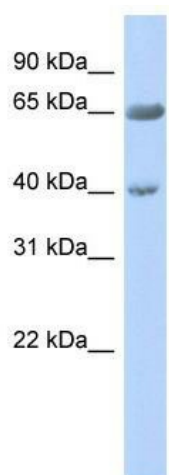
Product datasheet for **TA339135**

ZNF234 Rabbit Polyclonal Antibody

Product data:

Product Type:	Primary Antibodies
Applications:	WB
Recommended Dilution:	WB
Reactivity:	Human
Host:	Rabbit
Isotype:	IgG
Clonality:	Polyclonal
Immunogen:	The immunogen for anti-ZNF234 antibody: synthetic peptide directed towards the middle region of human ZNF234. Synthetic peptide located within the following region: KGFKWSLNLDMHQVRVHTGKPYTCGECGKHFSQASSLQLHQSHTGKPY
Formulation:	Liquid. Purified antibody supplied in 1x PBS buffer with 0.09% (w/v) sodium azide and 2% sucrose.
Concentration:	lot specific
Purification:	Protein A purified
Conjugation:	Unconjugated
Storage:	Store at -20°C as received.
Stability:	Stable for 12 months from date of receipt.
Predicted Protein Size:	80 kDa
Gene Name:	zinc finger protein 234
Database Link:	NP_006621 Entrez Gene 10780 Human Q14588
Background:	May be involved in transcriptional regulation.
Synonyms:	HZF4; ZNF269
Note:	Immunogen Sequence Homology: Dog: 100%; Pig: 100%; Rat: 100%; Horse: 100%; Human: 100%; Mouse: 86%; Bovine: 86%; Rabbit: 86%; Guinea pig: 79%
Protein Families:	Transcription Factors


[View online »](#)

Product images:


WB Suggested Anti-ZNF234 Antibody Titration:
0.2-1 ug/ml; ELISA Titer: 1:62500; Positive Control:
Human Pancreas