

Product datasheet for **TA339129**

ZNF238 (ZBTB18) Rabbit Polyclonal Antibody

Product data:

Product Type:	Primary Antibodies
Applications:	WB
Recommended Dilution:	WB
Reactivity:	Human
Host:	Rabbit
Isotype:	IgG
Clonality:	Polyclonal
Immunogen:	The immunogen for Anti-ZNF238 antibody is: synthetic peptide directed towards the N-terminal region of Human ZNF238. Synthetic peptide located within the following region: SLSDGSSHIAGDLPSEDEGEDEKLNILPSKRDLAEPGNMWMRLPSDSA
Formulation:	Liquid. Purified antibody supplied in 1x PBS buffer with 0.09% (w/v) sodium azide and 2% sucrose. <i>Note that this product is shipped as lyophilized powder to China customers.</i>
Concentration:	lot specific
Purification:	Protein A purified
Conjugation:	Unconjugated
Storage:	Store at -20°C as received.
Stability:	Stable for 12 months from date of receipt.
Predicted Protein Size:	58 kDa
Gene Name:	zinc finger and BTB domain containing 18
Database Link:	NP_006343 Entrez Gene 10472 Human Q99592
Background:	This gene encodes a C2H2-type zinc finger protein which acts a transcriptional repressor of genes involved in neuronal development. The encoded protein recognizes a specific sequence motif and recruits components of chromatin to target genes. Alternative splicing results in multiple transcript variants. [provided by RefSeq, May 2013]
Synonyms:	C2H2-171; MRD22; RP58; TAZ-1; ZNF238

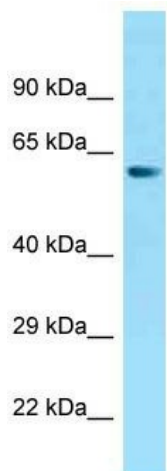


[View online »](#)

Note: Immunogen Sequence Homology: Human: 100%; Dog: 93%; Pig: 93%; Rat: 93%; Horse: 93%;
Mouse: 93%; Bovine: 93%; Rabbit: 93%; Guinea pig: 91%

Protein Families: Transcription Factors

Product images:



WB Suggested Anti-ZNF238 Antibody; Titration:
1.0 ug/ml; Positive Control: THP-1 Whole Cell