

## Product datasheet for **TA339128**

### ZNF238 (ZBTB18) Rabbit Polyclonal Antibody

#### Product data:

Product Type:	Primary Antibodies
Applications:	WB
Recommended Dilution:	WB
Reactivity:	Human
Host:	Rabbit
Isotype:	IgG
Clonality:	Polyclonal
Immunogen:	The immunogen for anti-ZNF238 antibody: synthetic peptide directed towards the N terminal of human ZNF238. Synthetic peptide located within the following region: YDIVKVCKKKLKEKATTEADSTKKEEDASSCSKDKVESLSDGSSHIAGDLP
Formulation:	Liquid. Purified antibody supplied in 1x PBS buffer with 0.09% (w/v) sodium azide and 2% sucrose. <i>Note that this product is shipped as lyophilized powder to China customers.</i>
Concentration:	lot specific
Purification:	Protein A purified
Conjugation:	Unconjugated
Storage:	Store at -20°C as received.
Stability:	Stable for 12 months from date of receipt.
Predicted Protein Size:	58 kDa
Gene Name:	zinc finger and BTB domain containing 18
Database Link:	<a href="#">NP_006343</a> <a href="#">Entrez Gene 10472 Human</a> <a href="#">Q99592</a>
Background:	This gene encodes a C2H2-type zinc finger protein which acts a transcriptional repressor of genes involved in neuronal development. The encoded protein recognizes a specific sequence motif and recruits components of chromatin to target genes. Alternative splicing results in multiple transcript variants. [provided by RefSeq, May 2013]
Synonyms:	C2H2-171; MRD22; RP58; TAZ-1; ZNF238

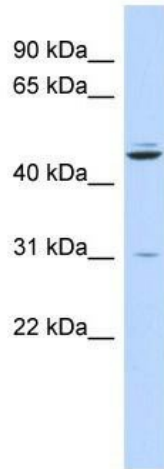


[View online »](#)

**Note:** Immunogen Sequence Homology: Dog: 100%; Pig: 100%; Rat: 100%; Horse: 100%; Human: 100%; Mouse: 100%; Bovine: 100%; Rabbit: 100%; Guinea pig: 100%; Zebrafish: 86%

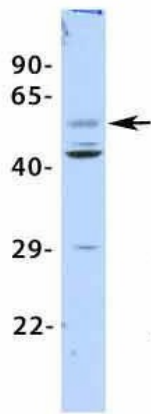
**Protein Families:** Transcription Factors

**Product images:**



WB Suggested Anti-ZNF238 Antibody Titration: 0.2-1 ug/ml; ELISA Titer: 1:312500; Positive Control: Human Pancreas

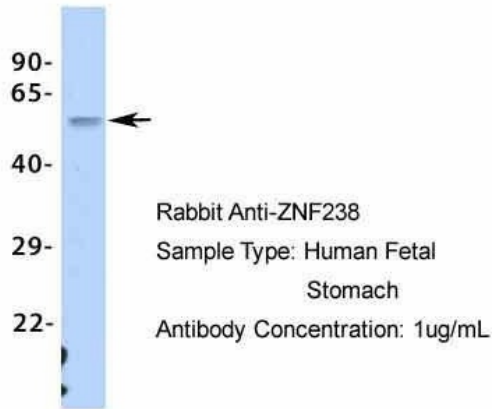
**ZNF238**



Rabbit Anti-ZNF238  
 Sample Type: Human Fetal Pancreas  
 Antibody Concentration: 1ug/mL

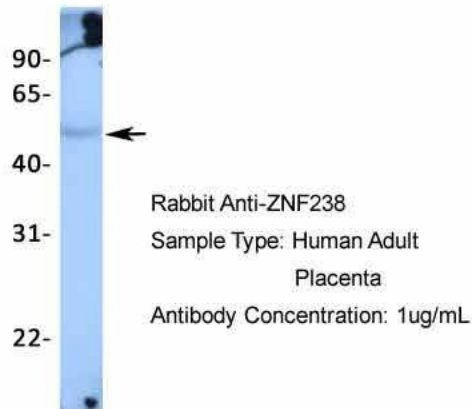
Host: Rabbit; Target Name: ZNF238; Sample Tissue: Human Fetal Pancreas; Antibody Dilution: 1.0 ug/ml

### ZNF238



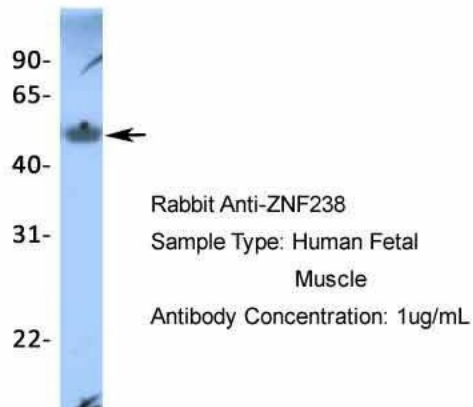
Host: Rabbit; Target Name: ZNF238; Sample  
Tissue: Human Fetal Stomach; Antibody Dilution:  
1.0 ug/ml

### ZNF238



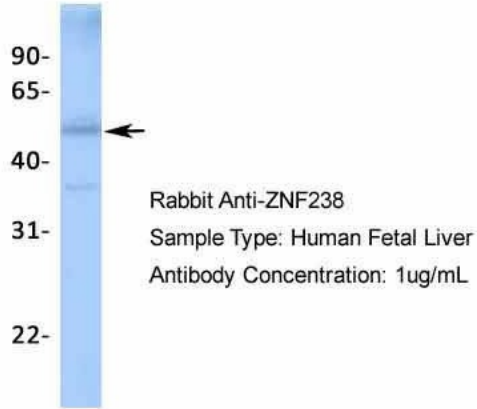
Host: Rabbit; Target Name: ZNF238; Sample  
Tissue: Human Adult Placenta; Antibody Dilution:  
1.0 ug/ml

### ZNF238



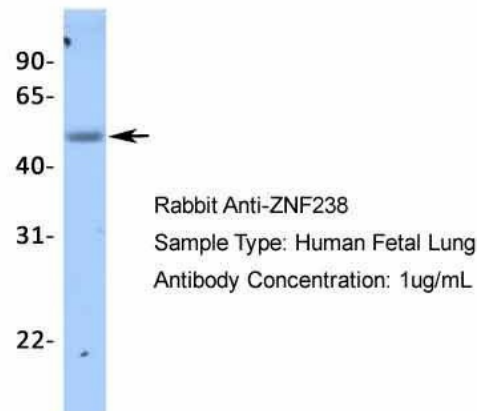
Host: Rabbit; Target Name: ZNF238; Sample  
Tissue: Human Fetal Muscle; Antibody Dilution:  
1.0 ug/ml

## ZNF238



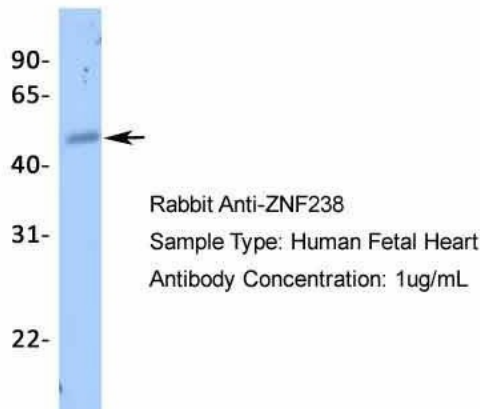
Host: Rabbit; Target Name: ZNF238; Sample Tissue: Human Fetal Liver; Antibody Dilution: 1.0 ug/ml

## ZNF238



Host: Rabbit; Target Name: ZNF238; Sample Tissue: Human Fetal Lung; Antibody Dilution: 1.0 ug/ml

## ZNF238



Host: Rabbit; Target Name: ZNF238; Sample Tissue: Human Fetal Heart; Antibody Dilution: 1.0 ug/ml