

Product datasheet for **TA339120**

CITED2 Rabbit Polyclonal Antibody

Product data:

Product Type:	Primary Antibodies
Applications:	WB
Recommended Dilution:	WB
Reactivity:	Human
Host:	Rabbit
Isotype:	IgG
Clonality:	Polyclonal
Immunogen:	The immunogen for anti-CITED2 antibody: synthetic peptide directed towards the N terminal of human CITED2. Synthetic peptide located within the following region: HIHYGAGNMNATSGIRHAMGPGTVNGGHPPSALAPAARFNNSQFMGPPVA
Formulation:	Liquid. Purified antibody supplied in 1x PBS buffer with 0.09% (w/v) sodium azide and 2% sucrose. <i>Note that this product is shipped as lyophilized powder to China customers.</i>
Concentration:	lot specific
Purification:	Protein A purified
Conjugation:	Unconjugated
Storage:	Store at -20°C as received.
Stability:	Stable for 12 months from date of receipt.
Predicted Protein Size:	28 kDa
Gene Name:	Cbp/p300 interacting transactivator with Glu/Asp rich carboxy-terminal domain 2
Database Link:	NP_006070 Entrez Gene 10370 Human Q99967
Background:	The protein encoded by this gene inhibits transactivation of HIF1A-induced genes by competing with binding of hypoxia-inducible factor 1-alpha to p300-CH1. Mutations in this gene are a cause of cardiac septal defects. Alternatively spliced transcript variants encoding multiple isoforms have been observed for this gene. [provided by RefSeq, May 2012]
Synonyms:	ASD8; MRG-1; MRG1; P35SRJ; VSD2

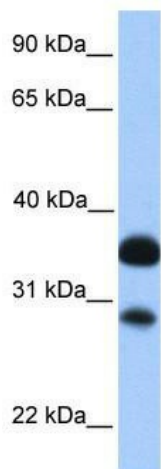


[View online »](#)

Note: Immunogen Sequence Homology: Dog: 100%; Pig: 100%; Rat: 100%; Human: 100%; Mouse: 100%; Sheep: 100%; Bovine: 100%; Guinea pig: 100%

Protein Families: Druggable Genome, Transcription Factors

Product images:



WB Suggested Anti-CITED2 Antibody Titration:
0.2-1 ug/ml; Positive Control: Human brain