

Product datasheet for **TA339119**

Carbohydrate sulfotransferase 4 (CHST4) Rabbit Polyclonal Antibody

Product data:

Product Type:	Primary Antibodies
Applications:	IHC, WB
Recommended Dilution:	WB, IHC
Reactivity:	Human
Host:	Rabbit
Isotype:	IgG
Clonality:	Polyclonal
Immunogen:	The immunogen for anti-CHST4 antibody: synthetic peptide directed towards the middle region of human CHST4. Synthetic peptide located within the following region: CSQQPFEVVEKACRSYSHVVLKEVRFNLSLYPLLKDPSSLNLHIVHLVR
Formulation:	Liquid. Purified antibody supplied in 1x PBS buffer with 0.09% (w/v) sodium azide and 2% sucrose. <i>Note that this product is shipped as lyophilized powder to China customers.</i>
Concentration:	lot specific
Purification:	Protein A purified
Conjugation:	Unconjugated
Storage:	Store at -20°C as received.
Stability:	Stable for 12 months from date of receipt.
Predicted Protein Size:	45 kDa
Gene Name:	carbohydrate sulfotransferase 4
Database Link:	NP_005760 Entrez Gene 10164 Human Q8NCG5



[View online »](#)

Background: This gene encodes an N-acetylglucosamine 6-O sulfotransferase. The encoded enzyme transfers sulfate from 3'phosphoadenosine 5'phospho-sulfate to the 6-hydroxyl group of N-acetylglucosamine on glycoproteins. This protein is localized to the Golgi and is involved in the modification of glycan structures on ligands of the lymphocyte homing receptor L-selectin. Alternate splicing in the 5' UTR results in multiple transcript variants that encode the same protein. [provided by RefSeq, Oct 2009]

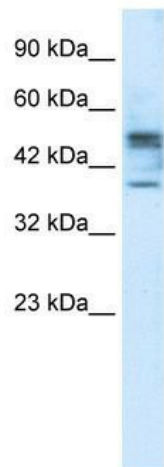
Synonyms: GlcNAc6ST2; GST3; HECGLCNAC6ST; LSST

Note: Immunogen Sequence Homology: Human: 100%; Rabbit: 93%; Dog: 86%; Pig: 86%; Rat: 86%; Horse: 86%; Mouse: 86%; Bovine: 86%; Guinea pig: 79%

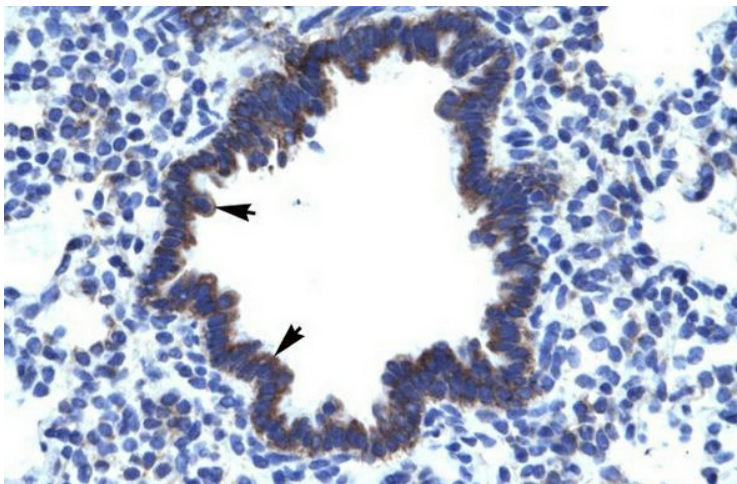
Protein Families: Transmembrane

Protein Pathways: Keratan sulfate biosynthesis, Metabolic pathways

Product images:



WB Suggested Anti-CHST4 Antibody Titration:
1.25 ug/ml; ELISA Titer: 1:312500; Positive
Control: Jurkat cell lysate



Human Lung