

## Product datasheet for **TA339115**

### SSX4 Rabbit Polyclonal Antibody

#### Product data:

Product Type:	Primary Antibodies
Applications:	IHC, WB
Recommended Dilution:	WB, IHC
Reactivity:	Human
Host:	Rabbit
Isotype:	IgG
Clonality:	Polyclonal
Immunogen:	The immunogen for anti-SSX4 antibody: synthetic peptide directed towards the middle region of human SSX4. Synthetic peptide located within the following region: FPKIMPKKPAEEENGLKEVPEASGPQNDGKQLCPPGNPSTLEKINKTSGP
Formulation:	Liquid. Purified antibody supplied in 1x PBS buffer with 0.09% (w/v) sodium azide and 2% sucrose. <i>Note that this product is shipped as lyophilized powder to China customers.</i>
Concentration:	lot specific
Purification:	Protein A purified
Conjugation:	Unconjugated
Storage:	Store at -20°C as received.
Stability:	Stable for 12 months from date of receipt.
Predicted Protein Size:	22 kDa
Gene Name:	SSX family member 4
Database Link:	<a href="#">NP_005627</a> <a href="#">Entrez Gene 6759 Human</a> <a href="#">O60224</a>



[View online »](#)

**Background:**

The product of this gene belongs to the family of highly homologous synovial sarcoma X (SSX) breakpoint proteins. These proteins may function as transcriptional repressors. They are also capable of eliciting spontaneously humoral and cellular immune responses in cancer patients, and are potentially useful targets in cancer vaccine-based immunotherapy. SSX1, SSX2 and SSX4 genes have been involved in the t(X;18) translocation characteristically found in all synovial sarcomas. This translocation results in the fusion of the synovial sarcoma translocation gene on chromosome 18 to one of the SSX genes on chromosome X. Chromosome Xp11 contains a segmental duplication resulting in two identical copies of synovial sarcoma, X breakpoint 4, SSX4 and SSX4B, in tail-to-tail orientation. This gene, SSX4, represents the more telomeric copy. Two transcript variants encoding distinct isoforms have been identified for this gene. [provided by RefSeq, Jul 2008]

**Synonyms:**

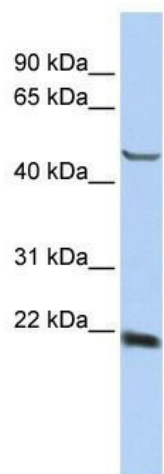
CT5.4

**Note:**

Immunogen Sequence Homology: Human: 100%

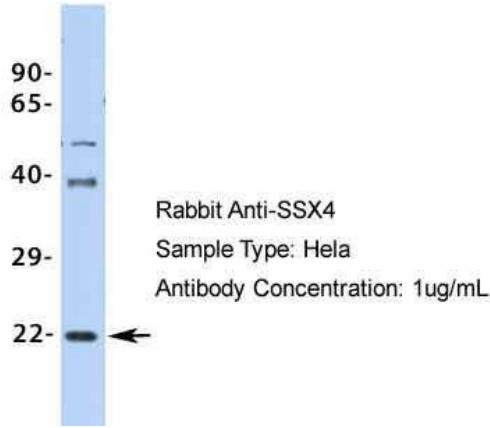
**Protein Families:**

Transcription Factors

**Product images:**

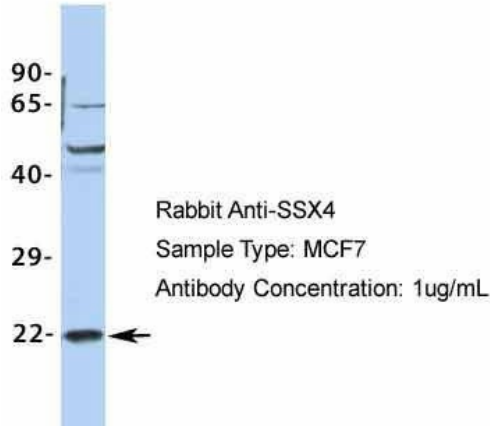
WB Suggested Anti-SSX4 Antibody Titration: 0.2-1 ug/ml; ELISA Titer: 1:312500; Positive Control: HepG2 cell lysate

### SSX4



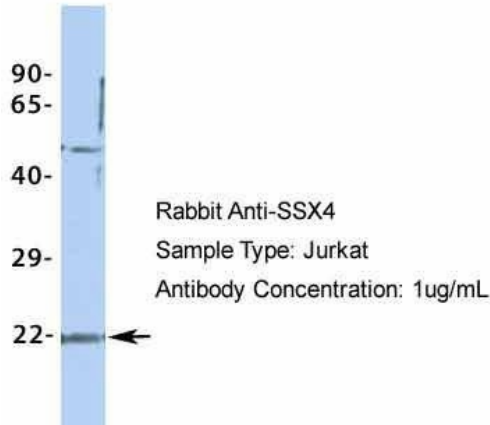
Host: Rabbit; Target Name: SSX4; Sample Tissue: HeLa; Antibody Dilution: 1.0 ug/ml

### SSX4



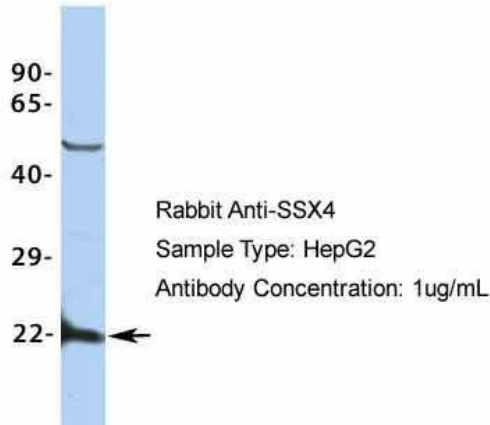
Host: Rabbit; Target Name: SSX4; Sample Tissue: MCF7; Antibody Dilution: 1.0 ug/ml

### SSX4



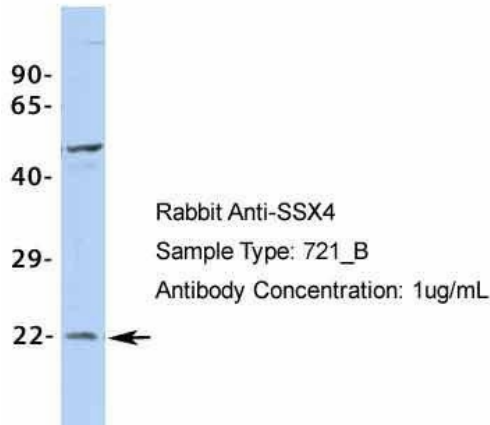
Host: Rabbit; Target Name: SSX4; Sample Tissue: Jurkat; Antibody Dilution: 1.0 ug/ml

### SSX4

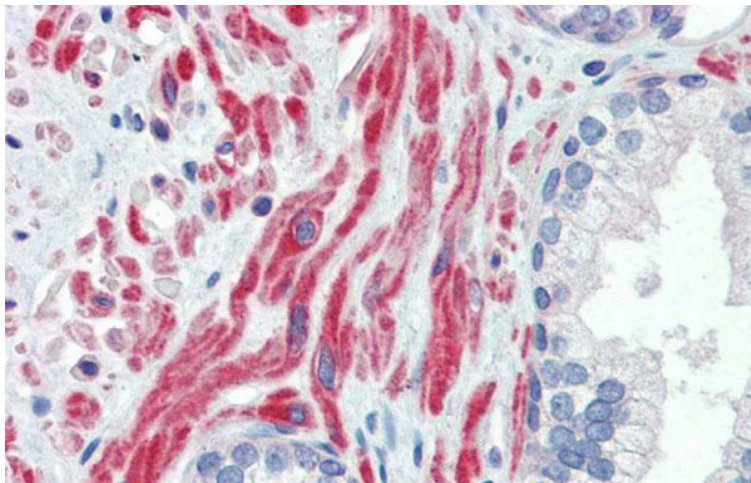


Host: Rabbit; Target Name: SSX4; Sample Tissue: HepG2; Antibody Dilution: 1.0 ug/ml

### SSX4



Host: Rabbit; Target Name: SSX4; Sample Tissue: 721\_B; Antibody Dilution: 1.0 ug/ml SSX4 is strongly supported by BioGPS gene expression data to be expressed in Human 721\_B cells



Immunohistochemistry with Human Prostate lysate tissue at an antibody concentration of 5.0 ug/ml using anti-SSX4 antibody