

Product datasheet for **TA339113**

ZRANB2 Rabbit Polyclonal Antibody

Product data:

Product Type:	Primary Antibodies
Applications:	IHC, WB
Recommended Dilution:	WB, IHC
Reactivity:	Human
Host:	Rabbit
Isotype:	IgG
Clonality:	Polyclonal
Immunogen:	The immunogen for anti-ZRANB2 antibody: synthetic peptide directed towards the middle region of human ZRANB2. Synthetic peptide located within the following region: EDKESGEEEDDEDLSKYKLDDEDEDDADLSKYNLDASEEEDSNKKKS
Formulation:	Liquid. Purified antibody supplied in 1x PBS buffer with 0.09% (w/v) sodium azide and 2% sucrose. <i>Note that this product is shipped as lyophilized powder to China customers.</i>
Concentration:	lot specific
Purification:	Protein A purified
Conjugation:	Unconjugated
Storage:	Store at -20°C as received.
Stability:	Stable for 12 months from date of receipt.
Predicted Protein Size:	36 kDa
Gene Name:	zinc finger RANBP2-type containing 2
Database Link:	NP_005446 Entrez Gene 9406 Human O95218
Background:	ZRANB2 is a splice factor required for alternative splicing of SFRS10/TRA2B transcripts. It may interfere with constitutive 5'-splice site selection.
Synonyms:	ZIS; ZIS1; ZIS2; ZNF265

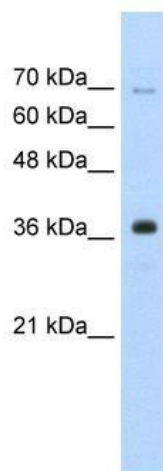


[View online »](#)

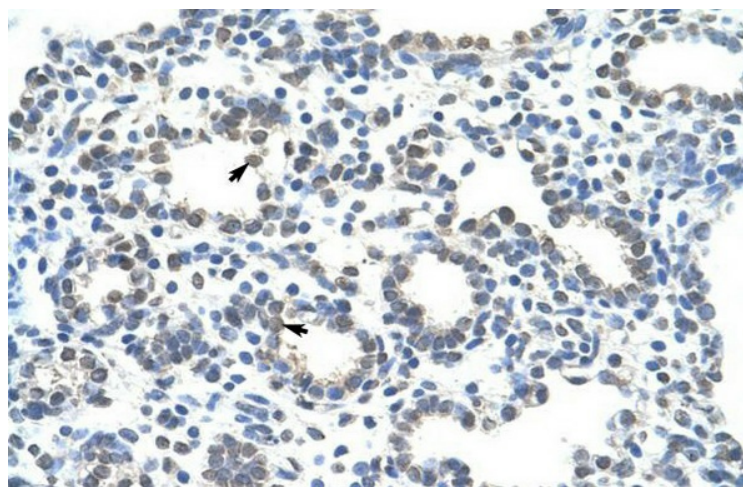
Note: Immunogen Sequence Homology: Dog: 100%; Pig: 100%; Rat: 100%; Horse: 100%; Human: 100%; Mouse: 100%; Bovine: 100%; Rabbit: 100%; Guinea pig: 100%; Zebrafish: 92%

Protein Families: Druggable Genome, Transcription Factors

Product images:



WB Suggested Anti-ZRANB2 Antibody Titration: 0.2-1 ug/ml; Positive Control: HepG2 cell lysate



Human Lung