

## Product datasheet for **TA339111**

### ZBTB22 Rabbit Polyclonal Antibody

#### Product data:

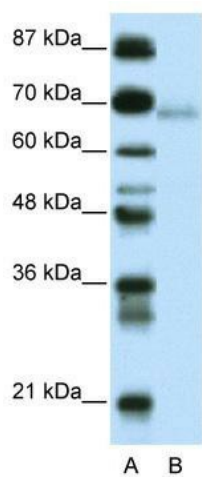
Product Type:	Primary Antibodies
Applications:	WB
Recommended Dilution:	WB
Reactivity:	Human
Host:	Rabbit
Isotype:	IgG
Clonality:	Polyclonal
Immunogen:	The immunogen for anti-ZBTB22 antibody: synthetic peptide directed towards the C terminal of human ZBTB22. Synthetic peptide located within the following region: MQGNQILVFPSSSSSSSQAPGQPPGNQAEHGAVTVGGTSVGSGLGVPGSV
Formulation:	Liquid. Purified antibody supplied in 1x PBS buffer with 0.09% (w/v) sodium azide and 2% sucrose. <i>Note that this product is shipped as lyophilized powder to China customers.</i>
Concentration:	lot specific
Purification:	Protein A purified
Conjugation:	Unconjugated
Storage:	Store at -20°C as received.
Stability:	Stable for 12 months from date of receipt.
Predicted Protein Size:	66 kDa
Gene Name:	zinc finger and BTB domain containing 22
Database Link:	<a href="#">NP_005444</a> <a href="#">Entrez Gene 9278 Human</a> <a href="#">O15209</a>
Background:	May be involved in transcriptional regulation.
Synonyms:	BING1; fru; fruitless; ZBTB22A; ZNF297; ZNF297A
Note:	Immunogen Sequence Homology: Dog: 100%; Horse: 100%; Human: 100%; Bovine: 100%; Pig: 92%; Rat: 92%; Mouse: 92%; Guinea pig: 86%



[View online »](#)

Protein Families: Transcription Factors

### Product images:



WB Suggested Anti-ZBTB22 Antibody Titration:  
0.2-1 ug/ml; ELISA Titer: 1:312500; Positive  
Control: Transfected 293T