

Product datasheet for **TA339110**

I-Myc (MYCL) Rabbit Polyclonal Antibody

Product data:

Product Type:	Primary Antibodies
Applications:	IHC, WB
Recommended Dilution:	WB, IHC
Reactivity:	Human
Host:	Rabbit
Isotype:	IgG
Clonality:	Polyclonal
Immunogen:	The immunogen for anti-MYCL1 antibody: synthetic peptide directed towards the middle region of human MYCL1. Synthetic peptide located within the following region: LERAVSDRLAPGAPRGNPPKASAAPDCTPSLEAGNPAPAAPCPLGEPKTQ
Formulation:	Liquid. Purified antibody supplied in 1x PBS buffer with 0.09% (w/v) sodium azide and 2% sucrose. <i>Note that this product is shipped as lyophilized powder to China customers.</i>
Concentration:	lot specific
Purification:	Protein A purified
Conjugation:	Unconjugated
Storage:	Store at -20°C as received.
Stability:	Stable for 12 months from date of receipt.
Predicted Protein Size:	22 kDa
Gene Name:	v-myc avian myelocytomatosis viral oncogene lung carcinoma derived homolog
Database Link:	NP_005367 Entrez Gene 4610 Human P12524
Background:	The MYCL1 gene encodes a protein which is associated with lung cancer in idiopathic pulmonary fibrosis.
Synonyms:	bHLHe38; L-Myc; LMYC; MYCL1

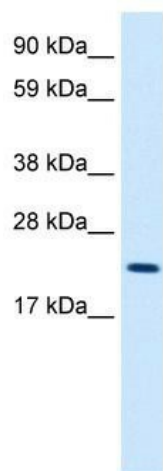


[View online »](#)

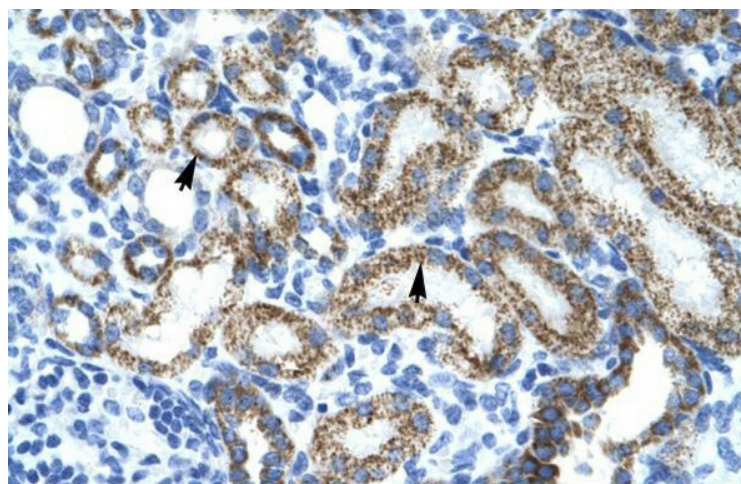
Note: Immunogen Sequence Homology: Rat: 100%; Human: 100%; Mouse: 100%; Rabbit: 100%; Dog: 92%; Pig: 92%; Horse: 92%; Bovine: 92%; Guinea pig: 92%

Protein Families: Druggable Genome, Transcription Factors

Product images:



WB Suggested Anti-MYCL1 Antibody Titration: 2.5 ug/ml; ELISA Titer: 1:312500; Positive Control: Human kidney



Human kidney