

Product datasheet for **TA339105**

ZNF539 (ZNF254) Rabbit Polyclonal Antibody

Product data:

Product Type:	Primary Antibodies
Applications:	WB
Recommended Dilution:	WB
Reactivity:	Human
Host:	Rabbit
Isotype:	IgG
Clonality:	Polyclonal
Immunogen:	The immunogen for anti-ZNF254 antibody: synthetic peptide directed towards the middle region of human ZNF254. Synthetic peptide located within the following region: SKVFQCDKYLKVFYKFLNSNRPKIRHTEKKSFKCKKRVKLCMLSHKTQH
Formulation:	Liquid. Purified antibody supplied in 1x PBS buffer with 0.09% (w/v) sodium azide and 2% sucrose.
Concentration:	lot specific
Purification:	Protein A purified
Conjugation:	Unconjugated
Storage:	Store at -20°C as received.
Stability:	Stable for 12 months from date of receipt.
Predicted Protein Size:	42 kDa
Gene Name:	zinc finger protein 254
Database Link:	NP_004867 Entrez Gene 9534 Human O75437



[View online »](#)

Background:

Zinc finger proteins have been shown to interact with nucleic acids and to have diverse functions. The zinc finger domain is a conserved amino acid sequence motif containing 2 specifically positioned cysteines and 2 histidines that are involved in coordinating zinc. Kruppel-related proteins form 1 family of zinc finger proteins. See ZFP93 (MIM 604749) for additional information on zinc finger proteins. [supplied by OMIM, Jul 2002]. Transcript Variant: This variant (3) differs in the 5' UTR compared to variant 1. Variants 1, 2, and 3 encode isoform a. ##Evidence-Data-START## Transcript exon combination :: BX504571.1, CN424004.1 [ECO:0000332] RNAseq introns :: mixed/partial sample support ERS025081, ERS025082 [ECO:0000350] ##Evidence-Data-END## COMPLETENESS: complete on the 3' end.

Synonyms:

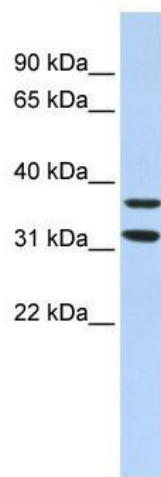
BMZF-5; FLJ58216; HD-ZNF1; hematopoietic-derived zinc finger protein; zinc finger protein 254; zinc finger protein 539; ZNF91L; ZNF539

Note:

Immunogen Sequence Homology: Human: 100%

Protein Families:

Transcription Factors

Product images:

WB Suggested Anti-ZNF254 Antibody Titration:
0.2-1 ug/ml; ELISA Titer: 1:312500; Positive
Control: 721_B cell lysate