

Product datasheet for **TA339104**

TBPL1 Rabbit Polyclonal Antibody

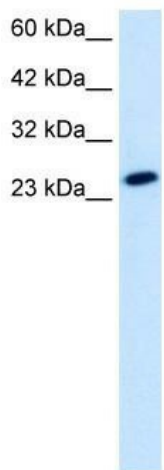
Product data:

Product Type:	Primary Antibodies
Applications:	IHC, WB
Recommended Dilution:	WB, IHC
Reactivity:	Human
Host:	Rabbit
Isotype:	IgG
Clonality:	Polyclonal
Immunogen:	The immunogen for anti-TBPL1 antibody: synthetic peptide directed towards the middle region of human TBPL1. Synthetic peptide located within the following region: LQKLGQVIFTDFKVVNVLAVCNMPFEIRLPEFTKNNRPHASYEPELHPA
Formulation:	Liquid. Purified antibody supplied in 1x PBS buffer with 0.09% (w/v) sodium azide and 2% sucrose. <i>Note that this product is shipped as lyophilized powder to China customers.</i>
Concentration:	lot specific
Purification:	Protein A purified
Conjugation:	Unconjugated
Storage:	Store at -20°C as received.
Stability:	Stable for 12 months from date of receipt.
Predicted Protein Size:	21 kDa
Gene Name:	TATA-box binding protein like 1
Database Link:	NP_004856 Entrez Gene 9519 Human P62380

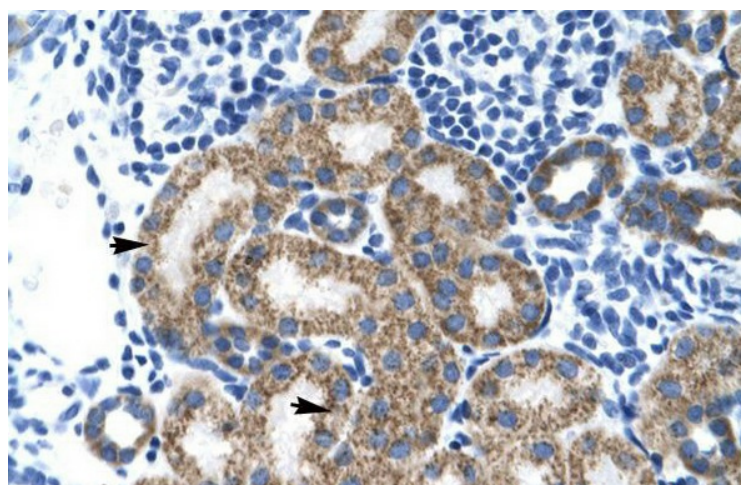


[View online »](#)

- Background:** This gene encodes a member of the TATA box-binding protein family. TATA box-binding proteins play a critical role in transcription by RNA polymerase II as components of the transcription factor IID (TFIID) complex. The encoded protein does not bind to the TATA box and initiates transcription from TATA-less promoters. This gene plays a critical role in spermatogenesis, and single nucleotide polymorphisms in this gene may be associated with male infertility. Alternatively spliced transcript variants have been observed for this gene, and a pseudogene of this gene is located on the long arm of chromosome 3. [provided by RefSeq, Nov 2011]
- Synonyms:** MGC:8389; MGC:9620; STUD; TLF; TLP; TRF2
- Note:** Immunogen Sequence Homology: Dog: 100%; Pig: 100%; Rat: 100%; Horse: 100%; Human: 100%; Mouse: 100%; Bovine: 100%; Rabbit: 100%; Guinea pig: 100%; Zebrafish: 92%
- Protein Families:** Transcription Factors
- Protein Pathways:** Basal transcription factors, Huntington's disease
- Product images:**



WB Suggested Anti-TBPL1 Antibody Titration:
1.25 ug/ml; ELISA Titer: 1:312500; Positive
Control: HepG2 cell lysate



Human kidney