

## Product datasheet for **TA339103**

### ONECUT2 Rabbit Polyclonal Antibody

#### Product data:

Product Type:	Primary Antibodies
Applications:	IHC, WB
Recommended Dilution:	WB, IHC
Reactivity:	Human
Host:	Rabbit
Isotype:	IgG
Clonality:	Polyclonal
Immunogen:	The immunogen for anti-ONECUT2 antibody: synthetic peptide directed towards the middle region of human ONECUT2. Synthetic peptide located within the following region: NGLHHPGHTQSHGPVLAPSRERPPSSSSGSQVATSGQLEEINTKEVAQRI
Formulation:	Liquid. Purified antibody supplied in 1x PBS buffer with 0.09% (w/v) sodium azide and 2% sucrose. <i>Note that this product is shipped as lyophilized powder to China customers.</i>
Concentration:	lot specific
Purification:	Protein A purified
Conjugation:	Unconjugated
Storage:	Store at -20°C as received.
Stability:	Stable for 12 months from date of receipt.
Predicted Protein Size:	52 kDa
Gene Name:	one cut homeobox 2
Database Link:	<a href="#">NP_004843</a> <a href="#">Entrez Gene 9480 Human O95948</a>
Background:	This gene encodes a member of the onecut family of transcription factors, which are characterized by a cut domain and an atypical homeodomain. The protein binds to specific DNA sequences and stimulates expression of target genes, including genes involved in melanocyte and hepatocyte differentiation. [provided by RefSeq, Jul 2008]
Synonyms:	OC-2; OC2

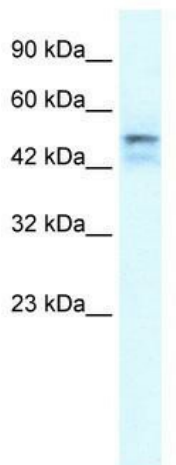


[View online »](#)

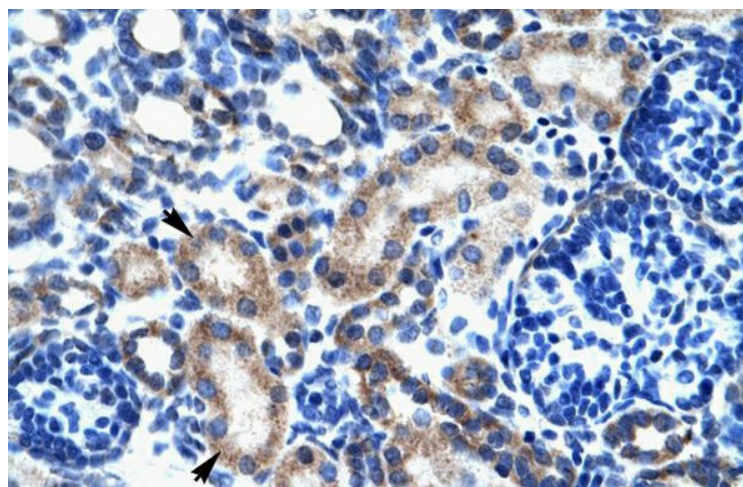
**Note:** Immunogen Sequence Homology: Dog: 100%; Pig: 100%; Rat: 100%; Horse: 100%; Human: 100%; Mouse: 100%; Bovine: 100%; Rabbit: 100%; Zebrafish: 100%; Guinea pig: 100%

**Protein Families:** Transcription Factors

**Product images:**



WB Suggested Anti-ONECUT2 Antibody Titration: 1.25 ug/ml; ELISA Titer: 1:312500; Positive Control: Jurkat cell lysate



Human kidney