

## Product datasheet for **TA339102**

### TCEAL1 Rabbit Polyclonal Antibody

#### Product data:

Product Type:	Primary Antibodies
Applications:	IHC, WB
Recommended Dilution:	WB, IHC
Reactivity:	Human
Host:	Rabbit
Isotype:	IgG
Clonality:	Polyclonal
Immunogen:	The immunogen for anti-TCEAL1 antibody: synthetic peptide directed towards the middle region of human TCEAL1. Synthetic peptide located within the following region: EGLSRKDLFEGRPPMEQPPCGVGKHKLEEGSFKERLARSRPQFRGDIHGR
Formulation:	Liquid. Purified antibody supplied in 1x PBS buffer with 0.09% (w/v) sodium azide and 2% sucrose. <i>Note that this product is shipped as lyophilized powder to China customers.</i>
Concentration:	lot specific
Purification:	Protein A purified
Conjugation:	Unconjugated
Storage:	Store at -20°C as received.
Stability:	Stable for 12 months from date of receipt.
Predicted Protein Size:	19 kDa
Gene Name:	transcription elongation factor A like 1
Database Link:	<a href="#">NP_001006641</a> <a href="#">Entrez Gene 9338 Human</a> <a href="#">Q15170</a>



[View online »](#)

**Background:**

This gene encodes a member of the transcription elongation factor A (SII)-like (TCEAL) gene family. Members of this family may function as nuclear phosphoproteins that modulate transcription in a promoter context-dependent manner. The encoded protein is similar to transcription elongation factor A/transcription factor SII and contains a zinc finger-like motif as well as a sequence related to the transcription factor SII Pol II-binding region. It may exert its effects via protein-protein interactions with other transcriptional regulators rather than via direct binding of DNA. Multiple family members are located on the X chromosome. Alternative splicing results in multiple transcript variants encoding a single isoform. [provided by RefSeq, Jul 2008]

**Synonyms:**

p21; pp21; SIIR; WEX9

**Note:**

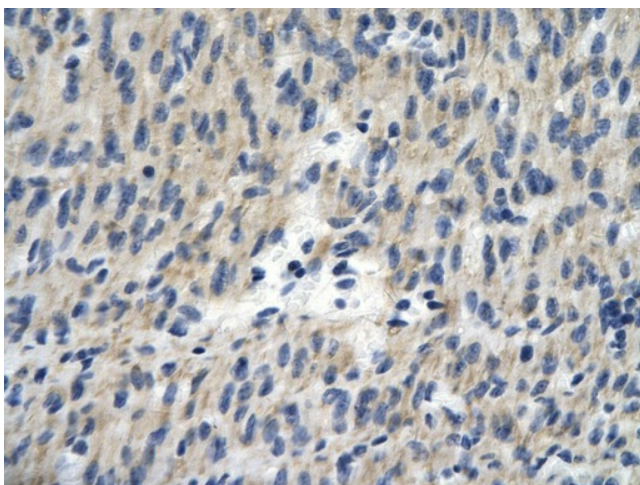
Immunogen Sequence Homology: Dog: 87%; Pig: 87%; Horse: 87%; Human: 87%; Mouse: 87%; Bovine: 87%; Rabbit: 87%; Rat: 80%

**Protein Families:**

Transcription Factors

**Product images:**

WB Suggested Anti-TCEAL1 Antibody Titration:  
0.2-1 ug/ml; ELISA Titer: 1:1562500; Positive  
Control: Human Placenta



Rabbit Anti-TCEAL1 antibody; Paraffin Embedded Tissue: Human Heart cell; Cellular Data: Epithelial cells of renal tubule; Antibody Concentration: 4.0-8.0 ug/ml; Magnification: 400X