

Product datasheet for **TA339099**

LRRFIP1 Rabbit Polyclonal Antibody

Product data:

Product Type:	Primary Antibodies
Applications:	WB
Recommended Dilution:	WB
Reactivity:	Mouse
Host:	Rabbit
Isotype:	IgG
Clonality:	Polyclonal
Immunogen:	The immunogen for Anti-Lrrfip1 antibody is: synthetic peptide directed towards the middle region of Mouse Lrrfip1. Synthetic peptide located within the following region: IREIKELNELKDQIQDVEGKYMQLKEMKDSLAEVEEKYKKAMVSNALD
Formulation:	Liquid. Purified antibody supplied in 1x PBS buffer with 0.09% (w/v) sodium azide and 2% sucrose. <i>Note that this product is shipped as lyophilized powder to China customers.</i>
Concentration:	lot specific
Purification:	Protein A purified
Conjugation:	Unconjugated
Storage:	Store at -20°C as received.
Stability:	Stable for 12 months from date of receipt.
Predicted Protein Size:	49 kDa
Gene Name:	leucine rich repeat (in FLII) interacting protein 1
Database Link:	NP_004726 Entrez Gene 16978 Mouse Q32MZ4



[View online »](#)

Background:

Transcriptional repressor which preferentially binds to the GC-rich consensus sequence (5'-AGCCCCGGCG-3') and may regulate expression of TNF, EGFR and PDGFA. May control smooth muscle cells proliferation following artery injury through PDGFA repression. May also bind double-stranded RNA (By similarity). Positively regulates Toll-like receptor (TLR) signaling in response to agonist probably by competing with the negative FLII regulator for MYD88-binding.

Synonyms:

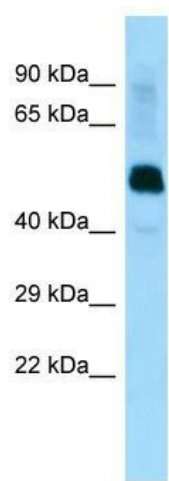
FLAP-1; FLAP1; FLIIAP1; GCF-2; GCF2; HUF1-1; TRIP

Note:

Immunogen Sequence Homology: Dog: 100%; Pig: 100%; Rat: 100%; Horse: 100%; Human: 100%; Mouse: 100%; Bovine: 100%; Rabbit: 100%; Guinea pig: 100%; Zebrafish: 86%

Protein Families:

Transcription Factors

Product images:

Host: Rabbit; Target Name: Lrrfip1; Sample Tissue: Mouse Muscle lysates; Antibody Dilution: 1.0 ug/ml