

## Product datasheet for **TA339098**

### **N myc interactor (NMI) Rabbit Polyclonal Antibody**

#### **Product data:**

Product Type:	Primary Antibodies
Applications:	IHC, WB
Recommended Dilution:	WB
Reactivity:	Human
Host:	Rabbit
Isotype:	IgG
Clonality:	Polyclonal
Immunogen:	The immunogen for anti-NMI antibody: synthetic peptide directed towards the middle region of human NMI. Synthetic peptide located within the following region: SFSKSRNGGGEVDRVDYDRQSGSAVITFVEIGVADKILKKKEYPLYINQT
Formulation:	Liquid. Purified antibody supplied in 1x PBS buffer with 0.09% (w/v) sodium azide and 2% sucrose. <i>Note that this product is shipped as lyophilized powder to China customers.</i>
Concentration:	lot specific
Purification:	Protein A purified
Conjugation:	Unconjugated
Storage:	Store at -20°C as received.
Stability:	Stable for 12 months from date of receipt.
Predicted Protein Size:	35 kDa
Gene Name:	N-myc and STAT interactor
Database Link:	<a href="#">NP_004679</a> <a href="#">Entrez Gene 9111 Human</a> <a href="#">Q13287</a>



[View online »](#)

**Background:**

NMYC interactor (NMI) encodes a protein that interacts with NMYC and CMYC (two members of the oncogene Myc family), and other transcription factors containing a Zip, HLH, or HLH-Zip motif. The NMI protein also interacts with all STATs except STAT2 and augments STAT-mediated transcription in response to cytokines IL2 and IFN-gamma. The NMI mRNA has low expression levels in all human fetal and adult tissues tested except brain and has high expression in cancer cell line-myeloid leukemias. [provided by RefSeq, Jul 2008]

**Synonyms:**

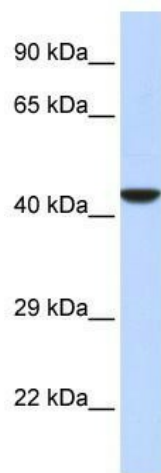
N-myc (and STAT) interactor; N-myc-interactor; N-myc and STAT interactor; N-myc interactor

**Note:**

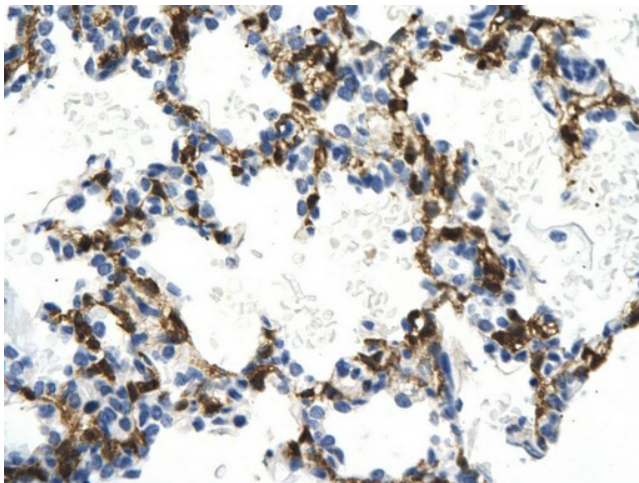
Immunogen Sequence Homology: Human: 100%; Rat: 86%; Mouse: 86%; Pig: 79%; Horse: 79%; Guinea pig: 79%

**Protein Families:**

Druggable Genome, Transcription Factors

**Product images:**


WB Suggested Anti-NMI Antibody Titration: 0.2-1 ug/ml; ELISA Titer: 1:312500; Positive Control: Human Placenta



Rabbit Anti-NMI antibody; Paraffin Embedded Tissue: Human Lung cell; Cellular Data: Epithelial cells of renal tubule; Antibody Concentration: 4.0-8.0 ug/ml; Magnification: 400X