

Product datasheet for **TA339093**

ILF2 Rabbit Polyclonal Antibody

Product data:

Product Type:	Primary Antibodies
Applications:	IHC, WB
Recommended Dilution:	WB, IHC
Reactivity:	Human
Host:	Rabbit
Isotype:	IgG
Clonality:	Polyclonal
Immunogen:	The immunogen for anti-ILF2 antibody: synthetic peptide directed towards the C terminal of human ILF2. Synthetic peptide located within the following region: HGGFRKILGQEGDASYLASEISTWDGVIVTPSEKAYEKPPEKKEGEEEE
Formulation:	Liquid. Purified antibody supplied in 1x PBS buffer with 0.09% (w/v) sodium azide and 2% sucrose. <i>Note that this product is shipped as lyophilized powder to China customers.</i>
Concentration:	lot specific
Purification:	Protein A purified
Conjugation:	Unconjugated
Storage:	Store at -20°C as received.
Stability:	Stable for 12 months from date of receipt.
Predicted Protein Size:	43 kDa
Gene Name:	interleukin enhancer binding factor 2
Database Link:	NP_004506 Entrez Gene 3608 Human Q12905



[View online »](#)

Background:

The protein encoded by this gene is the 45 kDa component of nuclear factor of activated T-cells (NFAT), a heterodimer of 45 kDa and 90 kDa proteins. NFAT is a transcription factor required for T-cell expression of the interleukin 2 gene. It also binds RNA and is an essential component for encapsidation and protein priming of hepatitis B viral polymerase. The complex has been shown to repair DNA breaks by nonhomologous end joining and can also negatively regulate the microRNA processing pathway. Alternative splicing results in multiple transcript variants. Related pseudogenes have been found on chromosomes 3 and 14. [provided by RefSeq, Jun 2012]

Synonyms:

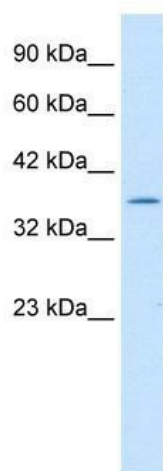
NF45; PRO3063

Note:

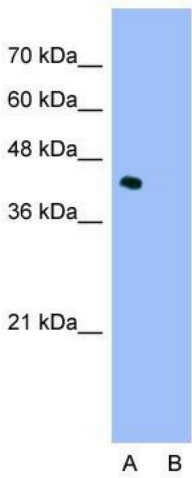
Immunogen Sequence Homology: Dog: 100%; Pig: 100%; Rat: 100%; Horse: 100%; Human: 100%; Mouse: 100%; Bovine: 100%; Rabbit: 100%; Guinea pig: 100%; Zebrafish: 93%

Protein Families:

Druggable Genome, Transcription Factors

Product images:

WB Suggested Anti-ILF2 Antibody Titration: 1.25 ug/ml; ELISA Titer: 1:62500; Positive Control: Jurkat cell lysate



Anti-ILF2 Western Blot & Peptide Block Validation

Lot Number: QC5256
Lysate: Jurkat Cell

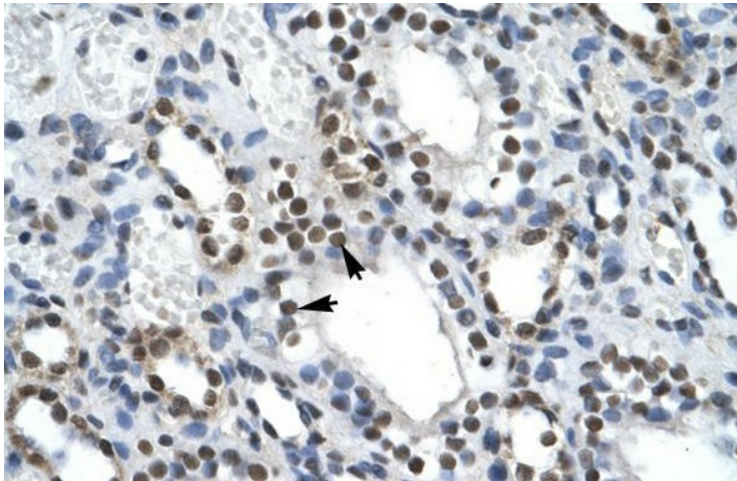
Lane A: Primary Antibody
Lane B: Primary Antibody + Blocking Peptide

Primary Antibody Concentration: 2.5µg/ml
Peptide Concentration: 2.0µg/ml
Lysate Quantity: 25µg/lane
Gel Concentration: 12%

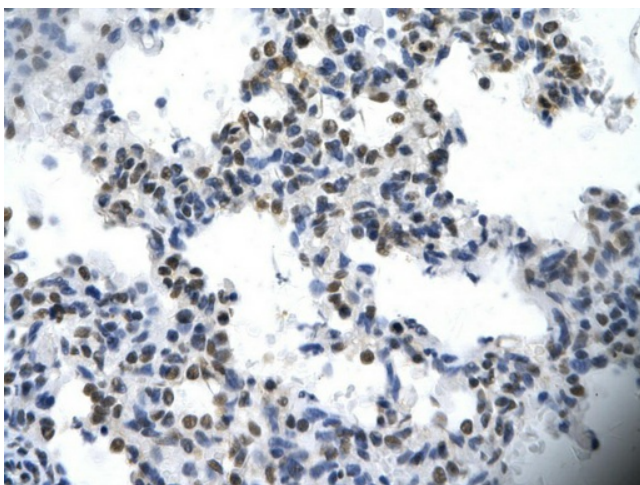
Host: Rabbit; Target Name: ILF2; Sample Tissue: Jurkat; Lane A: Primary Antibody; Lane B: Primary Antibody + Blocking Peptide ; Primary Antibody Concentration:2.5ug/mL; Peptide Concentration: 2.0ug/mL; Lysate Quantity: 25ug/lane; Gel Concentration: 12%



Sample Type: MCF-7 WT a whole cell lysates (110UG); Primary Dilution: 1.5mg/mL ; Secondary Antibody: LI-COR Donkey anti-rabbit; Secondary Dilution: 1:10,000; ; ILF2 is supported by BioGPS gene expression data to be expressed in MCF7



Human kidney



Rabbit Anti-ILF2 Antibody; Paraffin Embedded
Tissue: Human cardiac cell; Cellular Data:
Epithelial cells of renal tubule; Antibody
Concentration: 4.0-8.0 ug/ml; Magnification: 400X