

## Product datasheet for **TA339090**

### ZNF213 Rabbit Polyclonal Antibody

#### Product data:

Product Type:	Primary Antibodies
Applications:	WB
Recommended Dilution:	WB
Reactivity:	Human
Host:	Rabbit
Isotype:	IgG
Clonality:	Polyclonal
Immunogen:	The immunogen for anti-ZNF213 antibody: synthetic peptide directed towards the N terminal of human ZNF213. Synthetic peptide located within the following region: ATGPPPTVGARRRPSVPQEQHSHSAQPPALLKEGRPGETTDTCFVSGVHG
Formulation:	Liquid. Purified antibody supplied in 1x PBS buffer with 0.09% (w/v) sodium azide and 2% sucrose. <i>Note that this product is shipped as lyophilized powder to China customers.</i>
Concentration:	lot specific
Purification:	Protein A purified
Conjugation:	Unconjugated
Storage:	Store at -20°C as received.
Stability:	Stable for 12 months from date of receipt.
Predicted Protein Size:	51 kDa
Gene Name:	zinc finger protein 213
Database Link:	<a href="#">NP_004211</a> <a href="#">Entrez Gene 7760 Human</a> <a href="#">O14771</a>



[View online »](#)

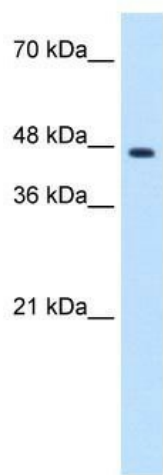
**Background:** C2H2 zinc finger proteins, such as ZNF213, have bipartite structures in which one domain binds DNA or RNA and the other modulates target gene expression. [supplied by OMIM, Apr 2004]. Transcript Variant: This variant (2) uses an alternate donor splice site at the first exon, hence has a different 5' UTR compared to variant 1. Transcript variants 1 and 2 encode the same protein. ##Evidence-Data-START## Transcript exon combination :: AK289834.1 [ECO:0000332] RNAseq introns :: single sample supports all introns ERS025083, ERS025087 [ECO:0000348] ##Evidence-Data-END## COMPLETENESS: complete on the 3' end.

**Synonyms:** CR53; ZKSCAN21; ZSCAN53

**Note:** Immunogen Sequence Homology: Human: 100%; Horse: 86%

**Protein Families:** Transcription Factors

### Product images:



WB Suggested Anti-ZNF213 Antibody Titration:  
1.25 ug/ml; ELISA Titer: 1:12500; Positive Control:  
Transfected 293T