

Product datasheet for **TA339088**

SOX14 Rabbit Polyclonal Antibody

Product data:

Product Type:	Primary Antibodies
Applications:	WB
Recommended Dilution:	WB
Reactivity:	Human
Host:	Rabbit
Isotype:	IgG
Clonality:	Polyclonal
Immunogen:	The immunogen for anti-SOX14 antibody: synthetic peptide directed towards the N terminal of human SOX14. Synthetic peptide located within the following region: LRAQHMKEHPDYKYRPRRKPNLLKKDRYVFPLPYLGDTDPLKAAGLPVG
Formulation:	Liquid. Purified antibody supplied in 1x PBS buffer with 0.09% (w/v) sodium azide and 2% sucrose. <i>Note that this product is shipped as lyophilized powder to China customers.</i>
Concentration:	lot specific
Purification:	Protein A purified
Conjugation:	Unconjugated
Storage:	Store at -20°C as received.
Stability:	Stable for 12 months from date of receipt.
Predicted Protein Size:	26 kDa
Gene Name:	SRY-box 14
Database Link:	NP_004180 Entrez Gene 8403 Human O95416



[View online »](#)

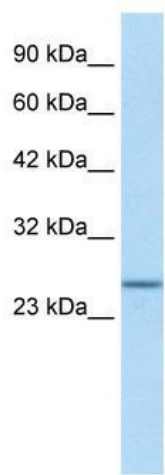
Background: This intronless gene encodes a member of the SOX (SRY-related HMG-box) family of transcription factors involved in the regulation of embryonic development and in the determination of the cell fate. The encoded protein may act as a transcriptional regulator after forming a protein complex with other proteins. Mutations in this gene are suggested to be responsible for the limb defects associated with blepharophimosis, ptosis, epicanthus inversus syndrome (BPES) and Mobius syndrome. [provided by RefSeq, Jul 2008]

Synonyms: SOX28

Note: Immunogen Sequence Homology: Pig: 100%; Rat: 100%; Goat: 100%; Human: 100%; Mouse: 100%; Bovine: 100%; Rabbit: 100%; Zebrafish: 100%; Guinea pig: 100%

Protein Families: Transcription Factors

Product images:



WB Suggested Anti-SOX14 Antibody Titration:
1.25 ug/ml; ELISA Titer: 1:62500; Positive Control:
HepG2 cell lysate