

Product datasheet for **TA339086**

FUBP1 Rabbit Polyclonal Antibody

Product data:

Product Type:	Primary Antibodies
Applications:	IHC, WB
Recommended Dilution:	WB, IHC
Reactivity:	Human
Host:	Rabbit
Isotype:	IgG
Clonality:	Polyclonal
Immunogen:	The immunogen for anti-FUBP1 antibody: synthetic peptide directed towards the middle region of human FUBP1. Synthetic peptide located within the following region: YYAHYYQQQAQPPPAAPAGAPTTTQTNGQGQQNPAPAGQVDYTKAWEEY
Formulation:	Liquid. Purified antibody supplied in 1x PBS buffer with 0.09% (w/v) sodium azide and 2% sucrose. <i>Note that this product is shipped as lyophilized powder to China customers.</i>
Concentration:	lot specific
Purification:	Protein A purified
Conjugation:	Unconjugated
Storage:	Store at -20°C as received.
Stability:	Stable for 12 months from date of receipt.
Predicted Protein Size:	67 kDa
Gene Name:	far upstream element binding protein 1
Database Link:	NP_003893 Entrez Gene 8880 Human Q96AE4
Background:	This gene encodes a ssDNA binding protein that activates the far upstream element (FUSE) of c-myc and stimulates expression of c-myc in undifferentiated cells. Regulation of FUSE by FUBP occurs through single-strand binding of FUBP to the non-coding strand. This protein has been shown to function as an ATP-dependent DNA helicase. [provided by RefSeq, Jul 2008]
Synonyms:	FBP; FUBP; hDH V



[View online »](#)

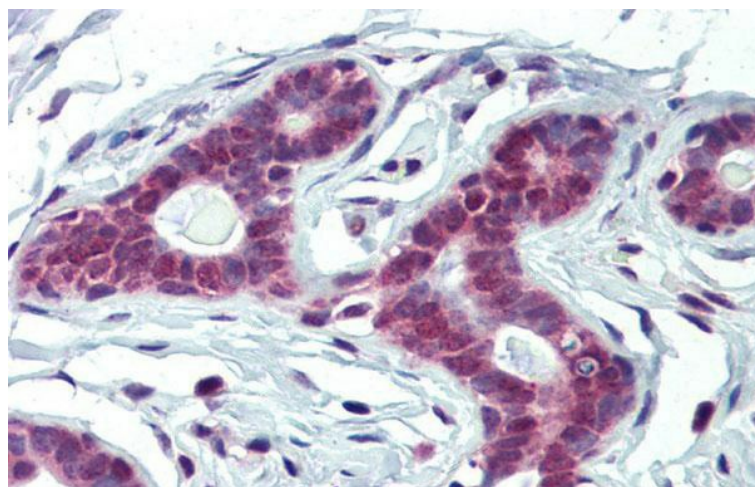
Note: Immunogen Sequence Homology: Dog: 100%; Rat: 100%; Human: 100%; Bovine: 100%; Rabbit: 100%; Pig: 93%; Guinea pig: 93%; Mouse: 92%

Protein Families: Stem cell - Pluripotency, Transcription Factors

Product images:



WB Suggested Anti-FUBP1 Antibody Titration: 0.2-1 ug/ml; ELISA Titer: 1:1562500; Positive Control: HepG2 cell lysate FUBP1 is strongly supported by BioGPS gene expression data to be expressed in Human HepG2 cells



Immunohistochemistry with Human Breast tissue at an antibody concentration of 5.0 ug/ml using anti-FUBP1 antibody