

Product datasheet for **TA339083**

EDF1 Rabbit Polyclonal Antibody

Product data:

Product Type:	Primary Antibodies
Applications:	IF, WB
Recommended Dilution:	WB, IF
Reactivity:	Human
Host:	Rabbit
Isotype:	IgG
Clonality:	Polyclonal
Immunogen:	The immunogen for anti-EDF1 antibody: synthetic peptide directed towards the N terminal of human EDF1. Synthetic peptide located within the following region: MAESDWDVTVLRKKGPTAAQAKSKQAILAAQRRGEDVETSKKWAAGQNK
Formulation:	Liquid. Purified antibody supplied in 1x PBS buffer with 0.09% (w/v) sodium azide and 2% sucrose. <i>Note that this product is shipped as lyophilized powder to China customers.</i>
Concentration:	lot specific
Purification:	Protein A purified
Conjugation:	Unconjugated
Storage:	Store at -20°C as received.
Stability:	Stable for 12 months from date of receipt.
Predicted Protein Size:	16 kDa
Gene Name:	endothelial differentiation related factor 1
Database Link:	NP_003783 Entrez Gene 8721 Human O60869
Background:	This gene encodes a protein that may regulate endothelial cell differentiation, lipid metabolism, and hormone-induced cardiomyocyte hypertrophy. The encoded protein has also been found to act as a transcriptional coactivator by interconnecting the general transcription factor TATA element-binding protein (TBP) and gene-specific activators. Alternate splicing results in multiple transcript variants. [provided by RefSeq, Jul 2013]



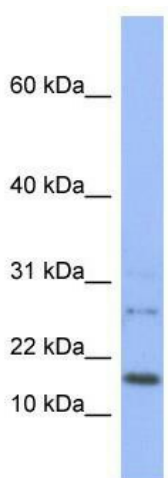
[View online »](#)

Synonyms: CFAP280; EDF-1; MBF1

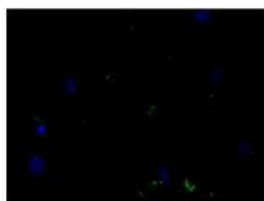
Note: Immunogen Sequence Homology: Dog: 100%; Pig: 100%; Rat: 100%; Horse: 100%; Human: 100%; Mouse: 100%; Bovine: 100%; Guinea pig: 100%; Zebrafish: 79%

Protein Families: Druggable Genome, Transcription Factors

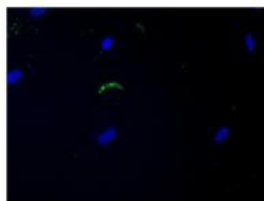
Product images:



WB Suggested Anti-EDF1 Antibody Titration: 0.2-1 ug/ml; ELISA Titer: 1:1562500; Positive Control: THP-1 cell lysate



Control: no antibody



EDF1

WB Suggested Anti-GPD1 Antibody ; Titration: 5 ug/ml; Positive Control: HG