

## Product datasheet for **TA339082**

### ZNF165 Rabbit Polyclonal Antibody

#### Product data:

Product Type:	Primary Antibodies
Applications:	WB
Recommended Dilution:	WB
Reactivity:	Human
Host:	Rabbit
Isotype:	IgG
Clonality:	Polyclonal
Immunogen:	The immunogen for anti-ZNF165 antibody: synthetic peptide directed towards the middle region of human ZNF165. Synthetic peptide located within the following region: THQKSKKHGTCDQSFKWNSDFINHQIYAGEKNHQYGKSFKSPKLAKHAA
Formulation:	Liquid. Purified antibody supplied in 1x PBS buffer with 0.09% (w/v) sodium azide and 2% sucrose. <i>Note that this product is shipped as lyophilized powder to China customers.</i>
Concentration:	lot specific
Purification:	Protein A purified
Conjugation:	Unconjugated
Storage:	Store at -20°C as received.
Stability:	Stable for 12 months from date of receipt.
Predicted Protein Size:	56 kDa
Gene Name:	zinc finger protein 165
Database Link:	<a href="#">NP_003438</a> <a href="#">Entrez Gene 7718 Human P49910</a>
Background:	This gene encodes a member of the Kruppel family of zinc finger proteins. Members of this DNA-binding protein family act as transcriptional regulators. This gene is located within a cluster of zinc finger family members. The encoded protein may play a role in spermatogenesis. [provided by RefSeq, Jul 2008]
Synonyms:	CT53; LD65; ZSCAN7

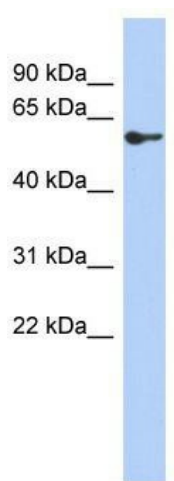


[View online »](#)

**Note:** Immunogen Sequence Homology: Human: 100%; Pig: 85%

**Protein Families:** Stem cell - Pluripotency, Transcription Factors

**Product images:**



WB Suggested Anti-ZNF165 Antibody Titration:  
0.2-1 ug/ml; ELISA Titer: 1:312500; Positive  
Control: NCI-H226 cell lysate