

Product datasheet for **TA339081**

ZNF165 Rabbit Polyclonal Antibody

Product data:

Product Type:	Primary Antibodies
Applications:	IHC, WB
Recommended Dilution:	WB, IHC
Reactivity:	Human
Host:	Rabbit
Isotype:	IgG
Clonality:	Polyclonal
Immunogen:	The immunogen for anti-ZNF165 antibody: synthetic peptide directed towards the middle region of human ZNF165. Synthetic peptide located within the following region: ISEASGESQDICKSAGRVRQWEKESGESQRLSSAQDEGFGKILTHKNTV
Formulation:	Liquid. Purified antibody supplied in 1x PBS buffer with 0.09% (w/v) sodium azide and 2% sucrose. <i>Note that this product is shipped as lyophilized powder to China customers.</i>
Concentration:	lot specific
Purification:	Protein A purified
Conjugation:	Unconjugated
Storage:	Store at -20°C as received.
Stability:	Stable for 12 months from date of receipt.
Predicted Protein Size:	56 kDa
Gene Name:	zinc finger protein 165
Database Link:	NP_003438 Entrez Gene 7718 Human P49910
Background:	This gene encodes a member of the Kruppel family of zinc finger proteins. Members of this DNA-binding protein family act as transcriptional regulators. This gene is located within a cluster of zinc finger family members. The encoded protein may play a role in spermatogenesis. [provided by RefSeq, Jul 2008]
Synonyms:	CT53; LD65; ZSCAN7



[View online »](#)

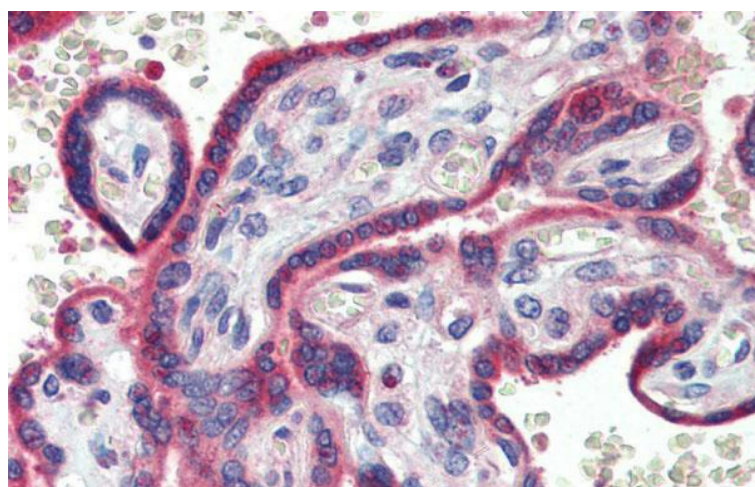
Note: Immunogen Sequence Homology: Human: 100%; Pig: 86%; Bovine: 79%

Protein Families: Stem cell - Pluripotency, Transcription Factors

Product images:



WB Suggested Anti-ZNF165 Antibody Titration:
0.2-1 ug/ml; ELISA Titer: 1:12500; Positive Control:
Hela cell lysate



Immunohistochemistry with Human Placenta
lysate tissue at an antibody concentration of 5.0
ug/ml using anti-ZNF165 antibody