

## Product datasheet for **TA339068**

### Suppressor of Ty 4 homolog 1 (SUPT4H1) Rabbit Polyclonal Antibody

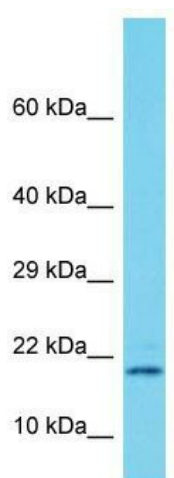
#### Product data:

Product Type:	Primary Antibodies
Applications:	WB
Recommended Dilution:	WB
Reactivity:	Rat
Host:	Rabbit
Isotype:	IgG
Clonality:	Polyclonal
Immunogen:	The immunogen for Anti-Supt4h1 antibody is: synthetic peptide directed towards the middle region of Rat Supt4h1. Synthetic peptide located within the following region: FDGIIAMMSPEDSWVSKWQRVSNFKPGVYAVSVTGRLPQGIVRELKSRGV
Formulation:	Liquid. Purified antibody supplied in 1x PBS buffer with 0.09% (w/v) sodium azide and 2% sucrose.
Concentration:	lot specific
Purification:	Protein A purified
Conjugation:	Unconjugated
Storage:	Store at -20°C as received.
Stability:	Stable for 12 months from date of receipt.
Predicted Protein Size:	12 kDa
Gene Name:	SPT4 homolog, DSIF elongation factor subunit
Database Link:	<a href="#">NP_003159</a> <a href="#">Entrez Gene 287608 Rat P63272</a>
Background:	The function of this protein remains unknown.
Synonyms:	SPT4; SPT4H; Supt4a; SUPT4H
Note:	Immunogen Sequence Homology: Dog: 100%; Pig: 100%; Rat: 100%; Horse: 100%; Human: 100%; Mouse: 100%; Bovine: 100%; Rabbit: 100%; Guinea pig: 100%; Zebrafish: 79%
Protein Families:	Transcription Factors



[View online »](#)

## Product images:



Host: Rabbit; Target Name: Supt4h1; Sample  
Tissue: Rat Pancreas lysates; Antibody Dilution:  
1.0 ug/ml