

Product datasheet for **TA339067**

SMARCD3 Rabbit Polyclonal Antibody

Product data:

Product Type:	Primary Antibodies
Applications:	IHC, WB
Recommended Dilution:	WB
Reactivity:	Human
Host:	Rabbit
Isotype:	IgG
Clonality:	Polyclonal
Immunogen:	The immunogen for anti-SMARCD3 antibody: synthetic peptide directed towards the N terminal of human SMARCD3. Synthetic peptide located within the following region: KRVDIQEALKRPMKQKRKLRLYISNTFNPAKPD AEDSDGSIASWELRVEG
Formulation:	Liquid. Purified antibody supplied in 1x PBS buffer with 0.09% (w/v) sodium azide and 2% sucrose. <i>Note that this product is shipped as lyophilized powder to China customers.</i>
Concentration:	lot specific
Purification:	Protein A purified
Conjugation:	Unconjugated
Storage:	Store at -20°C as received.
Stability:	Stable for 12 months from date of receipt.
Predicted Protein Size:	55 kDa
Gene Name:	SWI/SNF related, matrix associated, actin dependent regulator of chromatin, subfamily d, member 3
Database Link:	NP_001003801 Entrez Gene 6604 Human Q6STE5



[View online »](#)

Background:

The protein encoded by this gene is a member of the SWI/SNF family of proteins, whose members display helicase and ATPase activities and which are thought to regulate transcription of certain genes by altering the chromatin structure around those genes. The encoded protein is part of the large ATP-dependent chromatin remodeling complex SNF/SWI and has sequence similarity to the yeast Swp73 protein. Multiple alternatively spliced transcript variants have been found for this gene, but the biological validity of some variants has not been determined. [provided by RefSeq, Jul 2008]

Synonyms:

BAF60C; CRACD3; Rsc6p

Note:

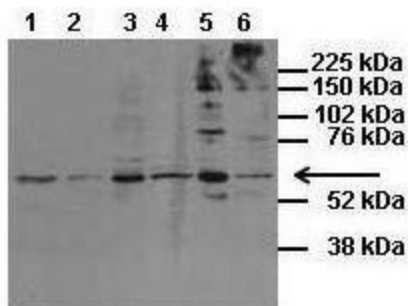
Immunogen Sequence Homology: Dog: 100%; Pig: 100%; Rat: 100%; Horse: 100%; Human: 100%; Mouse: 100%; Bovine: 100%; Rabbit: 100%; Zebrafish: 100%; Guinea pig: 100%

Protein Families:

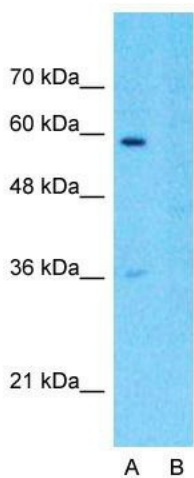
Druggable Genome, Transcription Factors

Product images:


WB Suggested Anti-SMARCD3 Antibody Titration: 0.2-1 ug/ml; ELISA Titer: 1:312500; Positive Control: 293T cell lysate SMARCD3 is supported by BioGPS gene expression data to be expressed in HEK293T

SMARCD3


Primary antibody dilution:1:200 Secondary antibody:Donkey anti-rabbit HRP Secondary antibody dilution:1:2000


Anti-SMARCD3 Western Blot & Peptide Block Validation

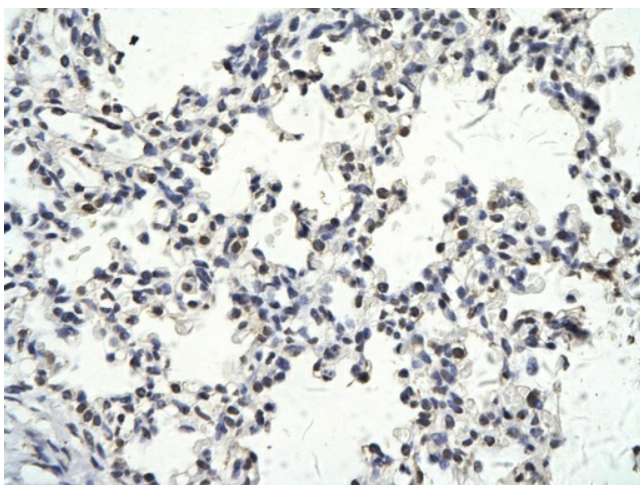
Lot Number: QC20007

Lysate: 293T Cell

Lane A: Primary Antibody
Lane B: Primary Antibody + Blocking Peptide

Primary Antibody Concentration: 1.0µg/ml
Peptide Concentration: 5.0µg/ml
Lysate Quantity: 25µg/lane
Gel Concentration: 12%

Host: Rabbit; Target Name: SMARCD3; Sample Tissue: 293T; Lane A: Primary Antibody; Lane B: Primary Antibody + Blocking Peptide ; Primary Antibody Concentration:1 ug/ml; Peptide Concentration: 5ug/ml; Lysate Quantity: 25ug/lane/lane; Gel Concentration: 0.12



Rabbit Anti-SMARCD3 antibody; Paraffin Embedded Tissue: Human Lung cell; Cellular Data: Epithelial cells of renal tubule; Antibody Concentration: 4.0-8.0 ug/ml; Magnification: 400X