

Product datasheet for **TA339065**

VMAT1 (SLC18A1) Rabbit Polyclonal Antibody

Product data:

Product Type:	Primary Antibodies
Applications:	IHC, WB
Recommended Dilution:	WB, IHC
Reactivity:	Human
Host:	Rabbit
Isotype:	IgG
Clonality:	Polyclonal
Immunogen:	The immunogen for anti-SLC18A1 antibody: synthetic peptide directed towards the middle region of human SLC18A1. Synthetic peptide located within the following region: YYLRSPPAKEEKLAILLSQDCPMETRMATQKPTKEFPLGEDSDEEPDHEE
Formulation:	Liquid. Purified antibody supplied in 1x PBS buffer with 0.09% (w/v) sodium azide and 2% sucrose. <i>Note that this product is shipped as lyophilized powder to China customers.</i>
Concentration:	lot specific
Purification:	Protein A purified
Conjugation:	Unconjugated
Storage:	Store at -20°C as received.
Stability:	Stable for 12 months from date of receipt.
Predicted Protein Size:	56 kDa
Gene Name:	solute carrier family 18 member A1
Database Link:	NP_003044 Entrez Gene 6570 Human P54219



[View online »](#)

Background:

The vesicular monoamine transporter acts to accumulate cytosolic monoamines into vesicles, using the proton gradient maintained across the vesicular membrane. Its proper function is essential to the correct activity of the monoaminergic systems that have been implicated in several human neuropsychiatric disorders. The transporter is a site of action of important drugs, including reserpine and tetrabenazine (Peter et al., 1993 [PubMed 7905859]). See also SLC18A2 (MIM 193001). [supplied by OMIM, Mar 2008]. Transcript Variant: This variant (3) lacks an alternate in-frame exon in the central coding region, compared to variant 1. The resulting isoform (b) has the same N- and C-termini but lacks an internal segment, compared to isoform a. Publication Note: This RefSeq record includes a subset of the publications that are available for this gene. Please see the Gene record to access additional publications. ##Evidence-Data-START## Transcript exon combination :: BC006317.2 [ECO:0000332] RNAseq introns :: mixed/partial sample support ERS025095 [ECO:0000350] ##Evidence-Data-END##

Synonyms:

CGAT; VAT1; VMAT1

Note:

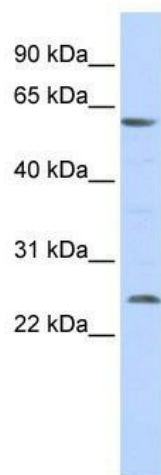
Immunogen Sequence Homology: Human: 100%; Horse: 92%; Rabbit: 91%; Pig: 86%; Rat: 86%; Guinea pig: 86%; Mouse: 85%; Bovine: 79%

Protein Families:

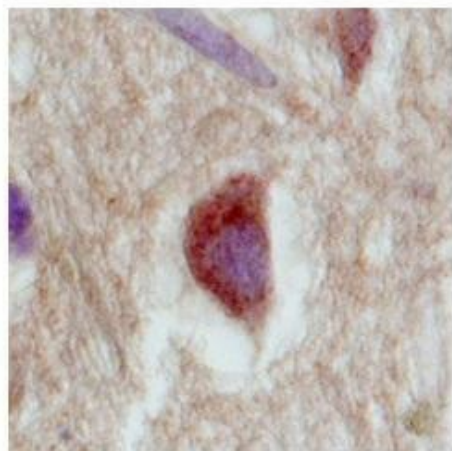
Transmembrane

Protein Pathways:

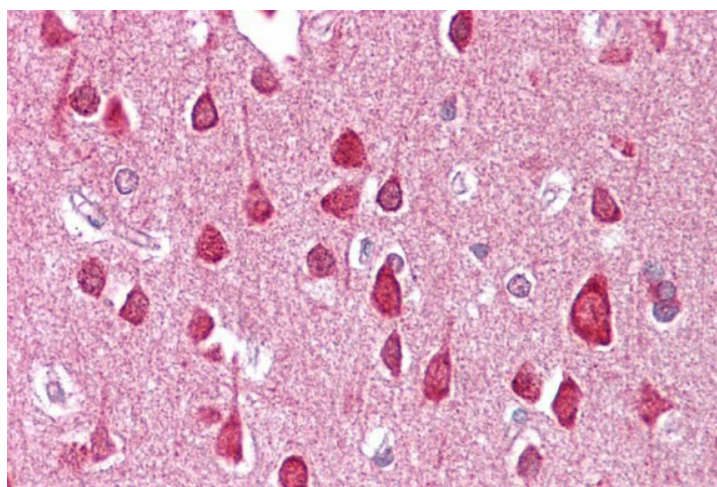
Parkinson's disease

Product images:

WB Suggested Anti-SLC18A1 Antibody Titration:
0.2-1 ug/ml; ELISA Titer: 1:62500; Positive Control:
293T cell lysate



Immunohistochemistry with Brain, cortex tissue at an antibody concentration of 2.5 ug/ml using anti-SLC18A1 antibody



Brain, cortex