

## Product datasheet for **TA339064**

### HOXB2 Rabbit Polyclonal Antibody

#### Product data:

Product Type:	Primary Antibodies
Applications:	WB
Recommended Dilution:	WB
Reactivity:	Human
Host:	Rabbit
Isotype:	IgG
Clonality:	Polyclonal
Immunogen:	The immunogen for anti-HOXB2 antibody: synthetic peptide directed towards the N terminal of human HOXB2. Synthetic peptide located within the following region: RAEDGPALPPPPPLPAAPPAPEFPWMKEKKSARKPSQSATSPSPAASA
Formulation:	Liquid. Purified antibody supplied in 1x PBS buffer with 0.09% (w/v) sodium azide and 2% sucrose. <i>Note that this product is shipped as lyophilized powder to China customers.</i>
Concentration:	lot specific
Purification:	Protein A purified
Conjugation:	Unconjugated
Storage:	Store at -20°C as received.
Stability:	Stable for 12 months from date of receipt.
Predicted Protein Size:	38 kDa
Gene Name:	homeobox B2
Database Link:	<a href="#">NP_002136</a> <a href="#">Entrez Gene 3212 Human</a> <a href="#">P14652</a>
Background:	This gene is a member of the Antp homeobox family and encodes a nuclear protein with a homeobox DNA-binding domain. It is included in a cluster of homeobox B genes located on chromosome 17. The encoded protein functions as a sequence-specific transcription factor that is involved in development. Increased expression of this gene is associated with pancreatic cancer. [provided by RefSeq, Jul 2008]

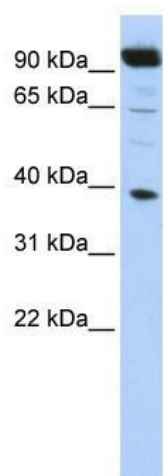


[View online »](#)

**Synonyms:** Hox-2.8; HOX2; HOX2H; K8

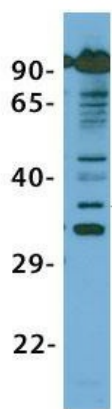
**Note:** Immunogen Sequence Homology: Dog: 100%; Pig: 100%; Rat: 100%; Horse: 100%; Human: 100%; Bovine: 100%; Guinea pig: 100%; Mouse: 92%; Rabbit: 79%

## Product images:



WB Suggested Anti-HOXB2 Antibody Titration:  
0.2-1 ug/ml; ELISA Titer: 1:312500; Positive  
Control: HepG2 cell lysate

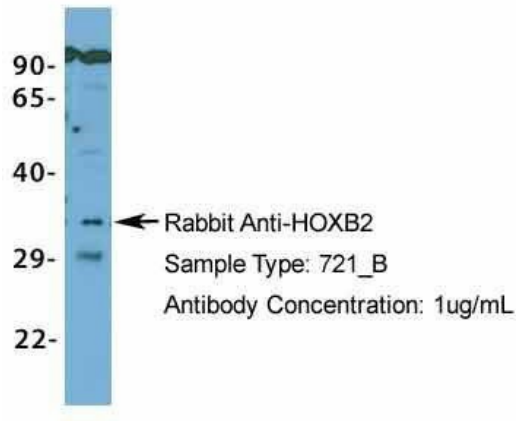
## HOXB2



Rabbit Anti-HOXB2  
Sample Type: HeLa  
Antibody Concentration: 1ug/mL

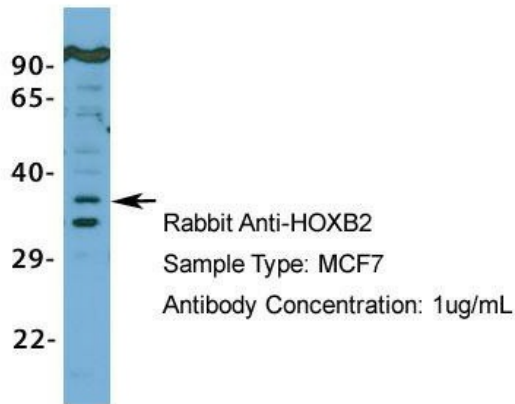
Host: Rabbit; Target Name: HOXB2; Sample  
Tissue: HeLa; Antibody Dilution: 1.0 ug/ml

## HOXB2



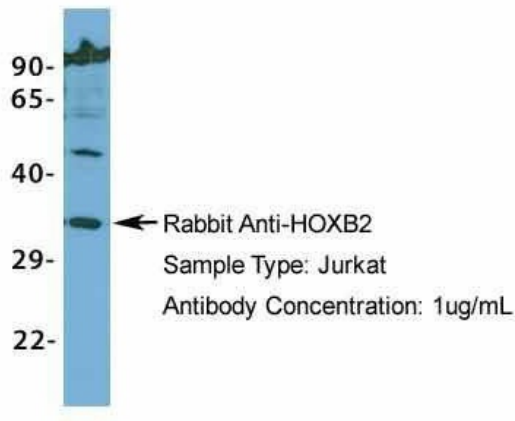
Host: Rabbit; Target Name: HOXB2; Sample  
Tissue: 721\_B; Antibody Dilution: 1.0 µg/ml

## HOXB2



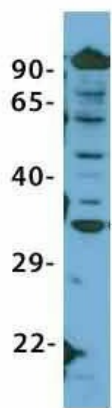
Host: Rabbit; Target Name: HOXB2; Sample  
Tissue: MCF7; Antibody Dilution: 1.0 µg/ml

## HOXB2



Host: Rabbit; Target Name: HOXB2; Sample  
Tissue: Jurkat; Antibody Dilution: 1.0 µg/ml

## HOXB2



← Rabbit Anti-HOXB2  
Sample Type: HepG2  
Antibody Concentration: 1ug/mL

Host: Rabbit; Target Name: HOXB2; Sample  
Tissue: HepG2; Antibody Dilution: 1.0 ug/ml