

Product datasheet for **TA339062**

CEBP gamma (CEBPG) Rabbit Polyclonal Antibody

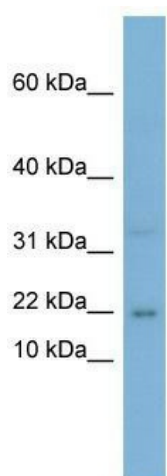
Product data:

Product Type:	Primary Antibodies
Applications:	WB
Recommended Dilution:	WB
Reactivity:	Human
Host:	Rabbit
Isotype:	IgG
Clonality:	Polyclonal
Immunogen:	The immunogen for anti-CEBPG antibody: synthetic peptide directed towards the middle region of human CEBPG. Synthetic peptide located within the following region: RNNMAVKK SRLKSKQKAQDTLQRVNQLKEENERLEAKIKLLTKELSVLKD
Formulation:	Liquid. Purified antibody supplied in 1x PBS buffer with 0.09% (w/v) sodium azide and 2% sucrose. <i>Note that this product is shipped as lyophilized powder to China customers.</i>
Concentration:	lot specific
Purification:	Protein A purified
Conjugation:	Unconjugated
Storage:	Store at -20°C as received.
Stability:	Stable for 12 months from date of receipt.
Predicted Protein Size:	16 kDa
Gene Name:	CCAAT/enhancer binding protein gamma
Database Link:	NP_001797 Entrez Gene 1054 Human P53567



[View online »](#)

- Background:** The C/EBP family of transcription factors regulates viral and cellular CCAAT/enhancer element-mediated transcription. C/EBP proteins contain the bZIP region, which is characterized by two motifs in the C-terminal half of the protein: a basic region involved in DNA binding and a leucine zipper motif involved in dimerization. The C/EBP family consist of several related proteins, C/EBP alpha, C/EBP beta, C/EBP gamma, and C/EBP delta, that form homodimers and that form heterodimers with each other. CCAAT/enhancer binding protein gamma may cooperate with Fos to bind PRE-I enhancer elements. Two transcript variants encoding the same protein have been found for this gene. [provided by RefSeq, Nov 2011]
- Synonyms:** EBP-1; GPE1BP; IG
- Note:** Immunogen Sequence Homology: Dog: 100%; Pig: 100%; Rat: 100%; Horse: 100%; Human: 100%; Mouse: 100%; Bovine: 100%; Rabbit: 100%; Guinea pig: 100%; Zebrafish: 86%
- Protein Families:** Druggable Genome, Transcription Factors

Product images:

WB Suggested Anti-CEBPG Antibody Titration: 0.2-1 ug/ml; Positive Control: PANC1 cell lysate
CEBPG is supported by BioGPS gene expression data to be expressed in PANC1