

## Product datasheet for **TA339058**

### KLF6 Rabbit Polyclonal Antibody

#### Product data:

Product Type:	Primary Antibodies
Applications:	WB
Recommended Dilution:	WB
Reactivity:	Human
Host:	Rabbit
Isotype:	IgG
Clonality:	Polyclonal
Immunogen:	The immunogen for anti-KLF6 antibody: synthetic peptide directed towards the middle region of human KLF6. Synthetic peptide located within the following region: SREPSQLWGCVPGELPSPGKVRSGTSGKPGDKGNGDASPDGRRRVHRCHF
Formulation:	Liquid. Purified antibody supplied in 1x PBS buffer with 0.09% (w/v) sodium azide and 2% sucrose. <i>Note that this product is shipped as lyophilized powder to China customers.</i>
Concentration:	lot specific
Purification:	Protein A purified
Conjugation:	Unconjugated
Storage:	Store at -20°C as received.
Stability:	Stable for 12 months from date of receipt.
Predicted Protein Size:	32 kDa
Gene Name:	Kruppel-like factor 6
Database Link:	<a href="#">NP_001291</a> <a href="#">Entrez Gene 1316 Human</a> <a href="#">Q99612</a>
Background:	This gene encodes a member of the Kruppel-like family of transcription factors. The zinc finger protein is a transcriptional activator, and functions as a tumor suppressor. Multiple transcript variants encoding different isoforms have been found for this gene, some of which are implicated in carcinogenesis. [provided by RefSeq, May 2009]
Synonyms:	BCD1; CBA1; COPEB; CPBP; GBF; PAC1; ST12; ZF9

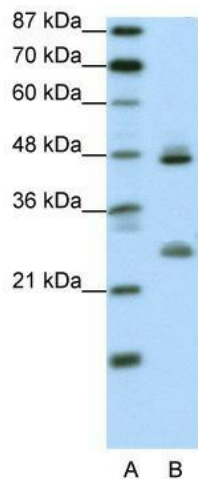


[View online »](#)

**Note:** Immunogen Sequence Homology: Human: 100%; Mouse: 93%; Bovine: 93%; Rabbit: 93%; Dog: 86%; Pig: 86%; Rat: 86%; Horse: 86%; Guinea pig: 86%

**Protein Families:** Druggable Genome, ES Cell Differentiation/IPS, Transcription Factors

**Product images:**



WB Suggested Anti-KLF6 Antibody Titration: 0.2-1 ug/ml; ELISA Titer: 1:312500; Positive Control: Transfected 293T