

## Product datasheet for **TA339054**

### PITX2 Rabbit Polyclonal Antibody

#### Product data:

Product Type:	Primary Antibodies
Applications:	IHC, WB
Recommended Dilution:	WB, IHC
Reactivity:	Human
Host:	Rabbit
Isotype:	IgG
Clonality:	Polyclonal
Immunogen:	The immunogen for anti-PITX2 antibody: synthetic peptide directed towards the N terminal of human PITX2. Synthetic peptide located within the following region: SAVSSSSCHHPQPLAMASVLAPGQPRSLDSSKHRLEVHTISDTSSPEAAE
Formulation:	Liquid. Purified antibody supplied in 1x PBS buffer with 0.09% (w/v) sodium azide and 2% sucrose. <i>Note that this product is shipped as lyophilized powder to China customers.</i>
Concentration:	lot specific
Purification:	Protein A purified
Conjugation:	Unconjugated
Storage:	Store at -20°C as received.
Stability:	Stable for 12 months from date of receipt.
Predicted Protein Size:	36 kDa
Gene Name:	paired like homeodomain 2
Database Link:	<a href="#">NP_000316</a> <a href="#">Entrez Gene 5308 Human</a> <a href="#">Q99697</a>



[View online »](#)

**Background:** This gene encodes a member of the RIEG/PITX homeobox family, which is in the bicoid class of homeodomain proteins. The encoded protein acts as a transcription factor and regulates procollagen lysyl hydroxylase gene expression. This protein plays a role in the terminal differentiation of somatotroph and lactotroph cell phenotypes, is involved in the development of the eye, tooth and abdominal organs, and acts as a transcriptional regulator involved in basal and hormone-regulated activity of prolactin. Mutations in this gene are associated with Axenfeld-Rieger syndrome, iridogoniodysgenesis syndrome, and sporadic cases of Peters anomaly. A similar protein in other vertebrates is involved in the determination of left-right asymmetry during development. Alternatively spliced transcript variants encoding distinct isoforms have been described. [provided by RefSeq, Jul 2008]

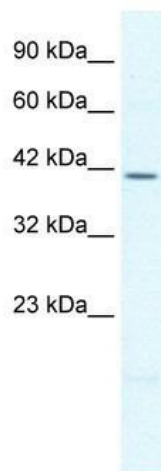
**Synonyms:** ARP1; Brx1; IDG2; IGDS; IGDS2; IHG2; IRID2; Otlx2; PTX2; RGS; RIEG; RIEG1; RS

**Note:** Immunogen Sequence Homology: Pig: 100%; Human: 100%; Mouse: 100%; Bovine: 100%; Dog: 93%; Rat: 93%; Rabbit: 93%

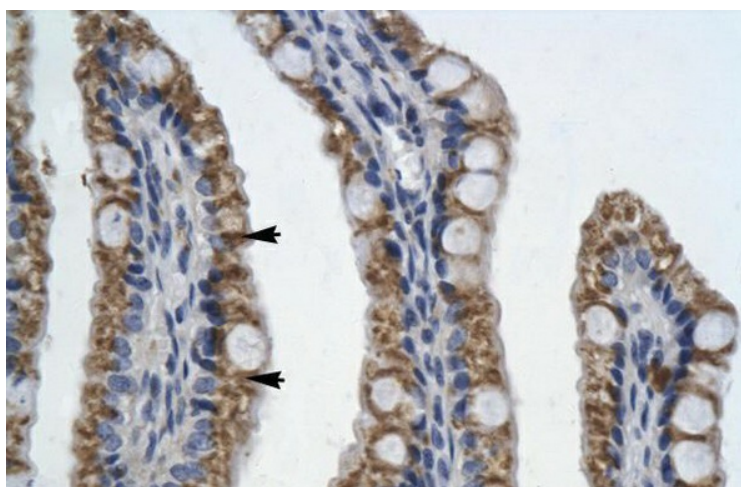
**Protein Families:** Transcription Factors

**Protein Pathways:** TGF-beta signaling pathway

### Product images:



WB Suggested Anti-PITX2 Antibody Titration: 2.5 ug/ml; ELISA Titer: 1:62500; Positive Control: HepG2 cell lysate



Human Intestine