

Product datasheet for **TA339052**

KCTD11 Rabbit Polyclonal Antibody

Product data:

Product Type:	Primary Antibodies
Applications:	WB
Recommended Dilution:	WB
Reactivity:	Human
Host:	Rabbit
Isotype:	IgG
Clonality:	Polyclonal
Immunogen:	The immunogen for anti-KCTD11 antibody: synthetic peptide directed towards the N terminal of human KCTD11. Synthetic peptide located within the following region: RLGRLDLPRGYGETALLRAEADFYQIRPLLDALRELEASQGTPAPTAALL
Formulation:	Liquid. Purified antibody supplied in 1x PBS buffer with 0.09% (w/v) sodium azide and 2% sucrose. <i>Note that this product is shipped as lyophilized powder to China customers.</i>
Concentration:	lot specific
Purification:	Protein A purified
Conjugation:	Unconjugated
Storage:	Store at -20°C as received.
Stability:	Stable for 12 months from date of receipt.
Predicted Protein Size:	26 kDa
Gene Name:	potassium channel tetramerization domain containing 11
Database Link:	NP_001002914 Entrez Gene 147040 Human Q693B1
Background:	The KCTD11 gene encodes a protein that has been identified as a suppressor of Hedgehog signaling. Its inactivation might lead to a deregulation of the tumor-promoting Hedgehog pathway in medulloblastoma.
Synonyms:	C17orf36; KCASH1; KCTD11; REN

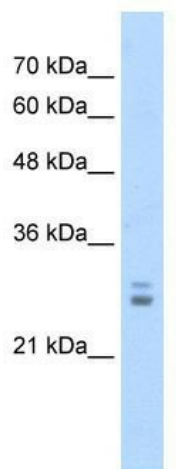


[View online »](#)

Note: Immunogen Sequence Homology: Pig: 100%; Rat: 100%; Horse: 100%; Human: 100%; Mouse: 100%; Bovine: 100%; Rabbit: 100%; Guinea pig: 100%; Goat: 90%

Protein Families: Ion Channels: Other

Product images:



WB Suggested Anti-KCTD11 Antibody Titration:
1.25 ug/ml; Positive Control: Jurkat cell lysate