

Product datasheet for **TA339044**

SPTLC1 Rabbit Polyclonal Antibody

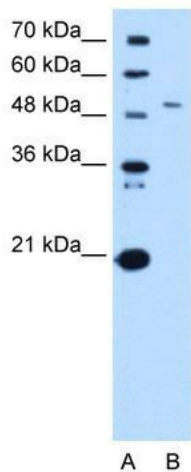
Product data:

Product Type:	Primary Antibodies
Applications:	IHC, WB
Recommended Dilution:	WB, IHC
Reactivity:	Human
Host:	Rabbit
Isotype:	IgG
Clonality:	Polyclonal
Immunogen:	The immunogen for anti-SPTLC1 antibody: synthetic peptide directed towards the middle region of human SPTLC1. Synthetic peptide located within the following region: ICPLPELVKLYKYKARIFLEESLSFGVLGEHGRGVTEHYGINIDDIDI
Formulation:	Liquid. Purified antibody supplied in 1x PBS buffer with 0.09% (w/v) sodium azide and 2% sucrose. <i>Note that this product is shipped as lyophilized powder to China customers.</i>
Concentration:	lot specific
Purification:	Protein A purified
Conjugation:	Unconjugated
Storage:	Store at -20°C as received.
Stability:	Stable for 12 months from date of receipt.
Predicted Protein Size:	53 kDa
Gene Name:	serine palmitoyltransferase long chain base subunit 1
Database Link:	NP_006406 Entrez Gene 10558 Human O15269

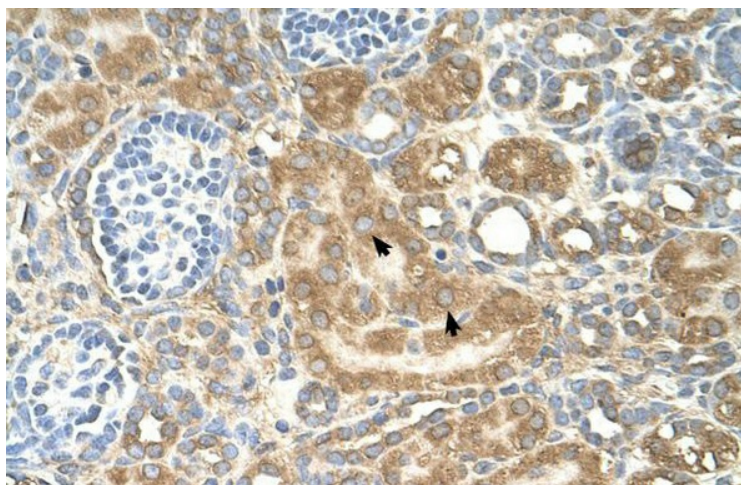


[View online »](#)

- Background:** This gene encodes a member of the class-II pyridoxal-phosphate-dependent aminotransferase family. The encoded protein is the long chain base subunit 1 of serine palmitoyltransferase. Serine palmitoyltransferase converts L-serine and palmitoyl-CoA to 3-oxosphinganine with pyridoxal 5'-phosphate and is the key enzyme in sphingolipid biosynthesis. Mutations in this gene were identified in patients with hereditary sensory neuropathy type 1. Alternatively spliced variants encoding different isoforms have been identified. Pseudogenes of this gene have been defined on chromosomes 1, 6, 10, and 13. [provided by RefSeq, Jul 2013]
- Synonyms:** HSN1; HSN1; LBC1; LCB1; SPT1; SPTI
- Note:** Immunogen Sequence Homology: Pig: 100%; Rat: 100%; Human: 100%; Mouse: 100%; Rabbit: 100%; Guinea pig: 100%; Dog: 93%; Horse: 93%; Bovine: 93%; Zebrafish: 93%; Yeast: 79%
- Protein Families:** Druggable Genome, Transmembrane
- Protein Pathways:** Metabolic pathways, Sphingolipid metabolism
- Product images:**



WB Suggested Anti-SPTLC1 Antibody Titration: 0.5 ug/ml; Positive Control: HepG2 cell lysate



Human kidney